

诚信高效/勇争第一

Keeping Integrity and Efficiency, Fighting to be the best

>> *Since 1936*



湘潭电机股份有限公司
XIANGTAN ELECTRIC MANUFACTURING CO.,LTD.

YX YXKS YXKK 系列6kV
高效高压三相异步电动机
YX/YXKS/YXKK(6kV)HIGH-EFFLCLENCY
HV3-PHASE ASYNCHRONOUS MOTOR

节能产品 惠民工程



地址：湖南省湘潭市电工北路66号

ADD:No66 .Diangong North Road. Xiangtan City.Hunan.P.R.C
订货电话 (Tel) :+86-731-58595243 (Phone) +86-15173269997

邮箱 (Mail) : xemcmotor@vip.qq.com

邮编：(P.C):411101 网址：Http:www.xemc.com.cn

出版时间：2019年2月



百年湘电 驱动世界 ▶

A hundred years old XEMC Driving the world by its force

公司愿景 Company Vision

百年湘电 驱动世界

A hundred years old XEMC Driving the world by its force

公司精神 Company Spirit

忠诚 创新 敬业 感恩

Loyalty, innovation, dedication, gratitude

公司价值观 Company Value

为股东创造最大价值

Create maximum value for shareholders

为职工谋求最大福祉

Seek maximum well-being for the staff and workers

公司作风 Company Style

守规矩 敢担当

Follow the rules Take responsibility

Corporate Culture

Keeping integrity and efficiency, striving to be the best;
Manufacturing competitive products to become the first choice in the industry;
Be pioneering and innovative;
Seek for excellence.

Marketing Philosophy

Establish a responsive service concept;
Committed to become a service provider and operator of system solutions for users.

电机文化

诚信高效、勇争第一，精品制造、行业首选，开拓创新、追求卓越。

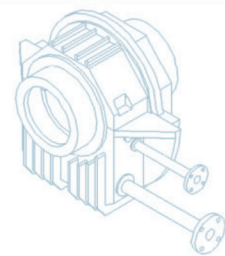
营销理念

树立有求必应的服务理念，
做致力于为用户提供系统解决方案的服务商和运营商。



共赢 共享

Win-Win Strategy
Information Sharing



目录 CATALOGUE

>> Part1

- 企业简介 P01-02
About Us
- 领导关怀 P03-04
Leaders' Care
- 先进的生产制造能力 P05-06
State-of-the-art Manufacturing Capability
- 世界一流的电机制造设备 P07-08
World-Class Electric Machine Manufacturing Equipment
- 一流的核心研发技术 P09-10
Best-in-class Core R & D Technology
- 可靠的质量保障体系 P11-12
Reliable Quality Assurance System
- 全方位的客服服务 P13-14
All-Round Customer Service
- 订货注意事项 P15-16
Instructions for Order Placement

>> Part2

- YX YXKS YXKK 6kV 系列
高效高压三相异步电动机 P17-24
YX, YXKS and YXKK Series 6kV High-Efficiency
High-Voltage Three-phase Asynchronous Motor
- YX YXKS YXKK 系列
6kV 技术数据 P25-41
YX, YXKS and YXKK Series 6kV Technical Data
- YX YXKS YXKK 系列
6kV 异步电动机外形及安装尺寸图 P29-56
YX, YXKS and YXKK Series 10kV Asynchronous Motor
---Outline Drawings and Mounting Dimensions
- 电机振动国家标准电机噪声国家标准 ... P51-52
National Standards for Noise of Electric Machines
National Standards for Vibration of Electric Machines
- 电机油漆颜色 P53-54
Paint Colors for Electric Machines



企业简介 About Us ▶



湘潭电机股份有限公司是由湘电集团有限公司联合北京地铁等6家企业于1999年共同发起设立，2002年7月在沪成功上市。公司依托湘潭电机七十多年来所形成的丰厚文化底蕴、强大的技术实力，以及良好的现代企业运作机制，不断创新发展，现已成为我国电工行业的大型骨干企业和国务院确立的国家重大技术装

备国产化研制基地。先后研制开发了新产品1100多项，其中100多项填补国内空白，为我国重大装备国产化作出了突出贡献。

电机事业部成立于2004年，是湘潭电机股份有限公司下辖最大的成品事业部，集研制、开发、生产、销售交流电机、永磁直驱风力发电机、工业发电机等产品于一体，目前已形成以核电核辅机电机制造技术、冶金变频电机制造技术、石化及矿山防爆电机制造技术、永磁风力发电机制造技术为核心的交流电机制造技术，产品广泛用于冶金、电站、风电、核电、建材、石化、造纸、水泥、水利等行业，产品远销全国各地和世界30多个国家、地区，并得到广大用户的高度评价。

“十二五”期间，电机事业部将按照“打造行业首选品牌”的战略目标，在提高与创新中求发展，以全新的姿态和国际化经营的视角，不断加快新技术、新产业的开发。在原有核心技术的基础上，着力打造高效节能电机、大功率风力发电机、余热发电、生物质发电等新技术和新兴产业，实现2012年达到60亿元、2015年100亿元的产业规模，推进企业科学跨越发展，以优质的产品、优良的服务回报社会。

Xiangtan Electric Manufacturing Co., Ltd. (XEMC) was jointly founded by Xiangtan Electric Manufacturing Group Co., Ltd. and other six enterprises such as Beijing Subway in 1999 and has been successfully listed in Shanghai Stock Exchange (SSE) since July 2007. Relying on profound cultural deposits, strong technical strength and good modern enterprise operation mechanism and continuous innovation and development for more than seventy years, XEMC has now become a large-scale key enterprise in the Chinese electric industry and a national research and production base for the localization of key technical equipment determined by the State Council. XEMC has developed more than 1100 new products, among which over 100 new products have filled the gaps in domestic market, and has made outstanding contributions to key equipment localization of China.

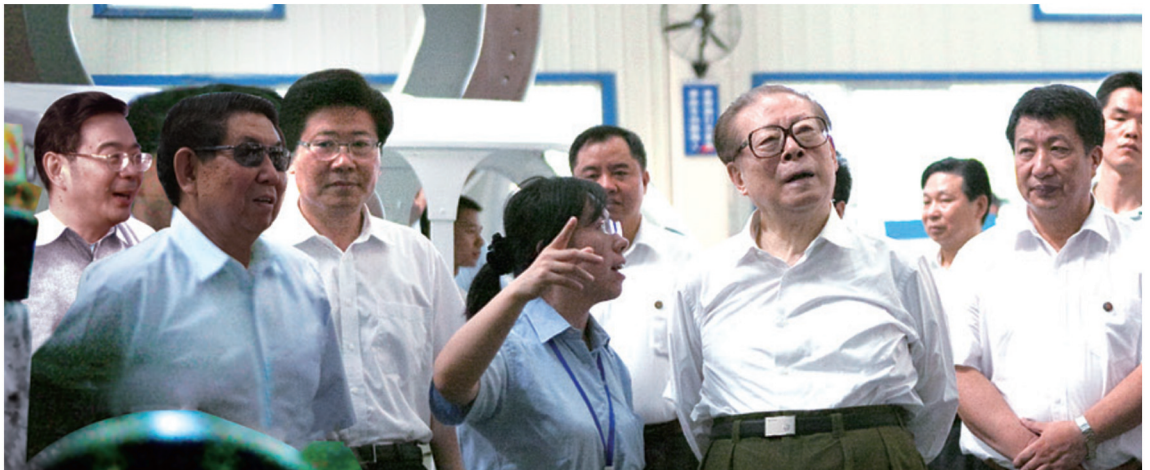
Motor Division, founded in 2004, is the largest finished product division owned by XEMC, integrating research, development, production and sales of AC motors, permanent-magnetic direct-driven wind turbine generators etc.. At present, XEMC has formed AC motor manufacturing technology with manufacturing technologies of auxiliary motors for thermal power stations and nuclear power stations, variable frequency motors for steel works, explosion-proof motors for petrochemical works and mining and permanent-magnetic wind turbine generators acted as the core. The products are widely used for metallurgy, power station, nuclear power, building material, petrochemicals, paper-making, cement, water conservancy etc. and are sold all over the country and to more than thirty countries and regions, which are highly praised by users.

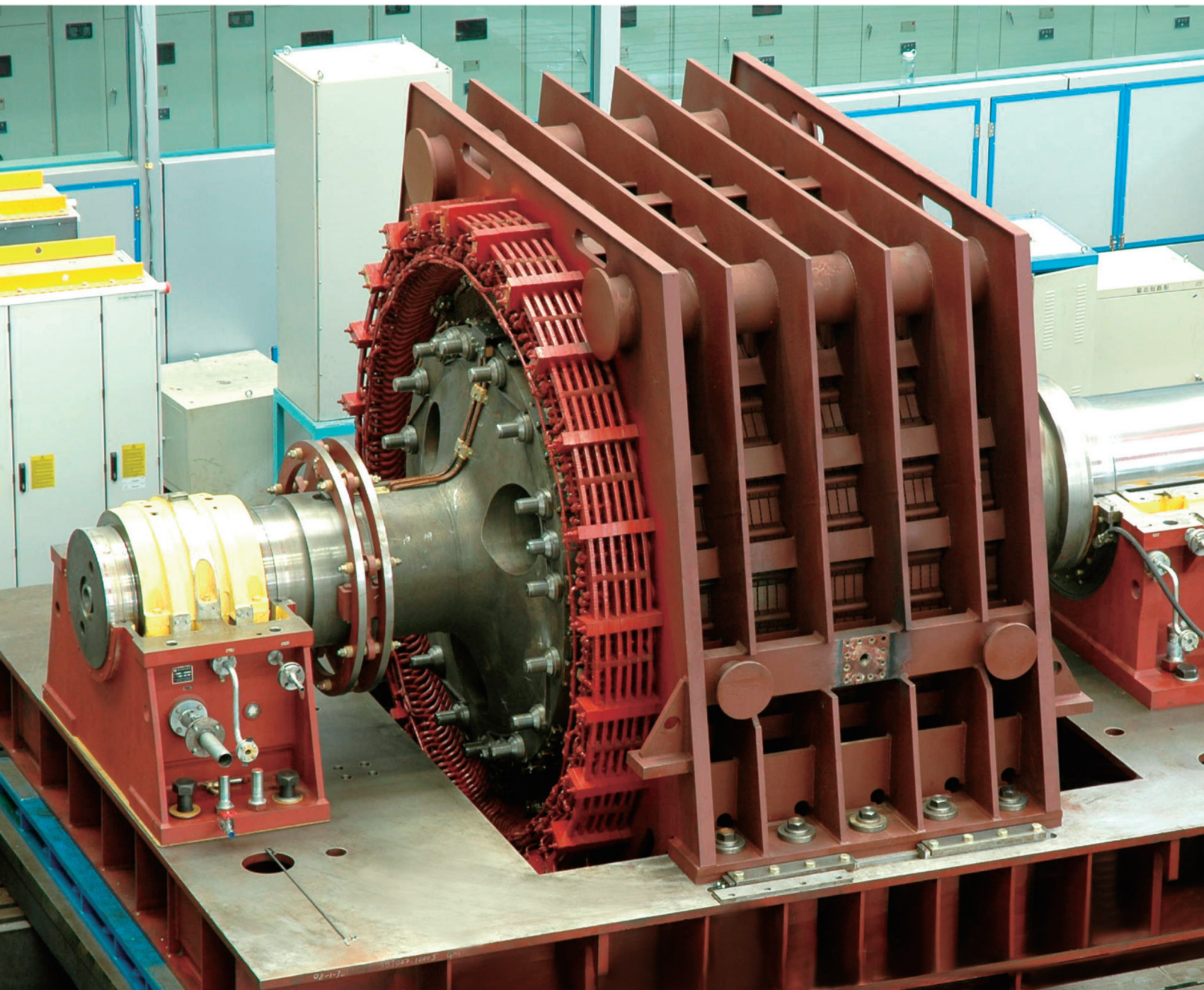
During the “Eleventh Five-Year” plan, XEMC Motor Division will seek development by improvement and innovation according to the strategical objective of “creating a preferred brand in the industry” and constantly speed up the development of new technologies and new products with a brand-new posture and a perspective of international operation. Based on existing core technologies, Motor Division will work hard to develop new technologies and create emerging industries such as high-efficiency energy-saving motors, high-power wind turbine generator sets, waste heat power generation, biomass power generation to realize industry scale of 6 billion RMB in 2012 and 10 billion RMB in 2015, promote scientific leapfrog progress and repay society with high-quality products and excellent service.

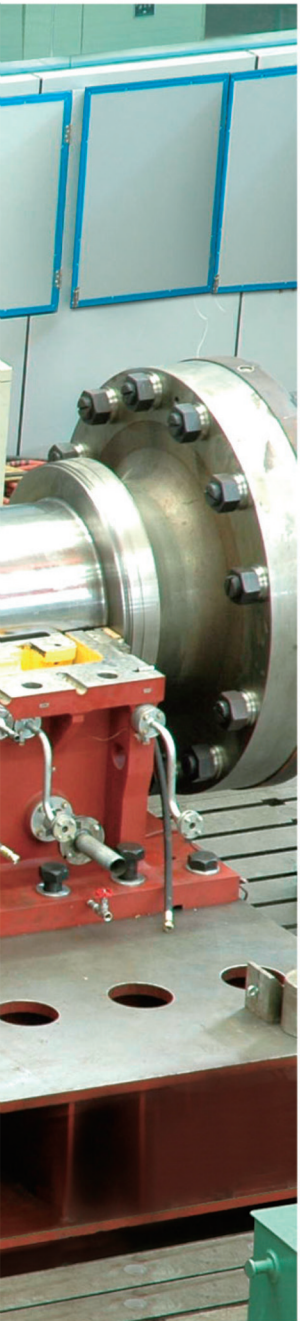




领导关怀 Leaders' care ▶







先进的生产制造能力 ▶ State-of-the-art Manufacturing Capability

电机事业部拥有六个生产车间，生产作业面积133737平方米，风力发电机制造厂房已成为世界上最大的永磁直驱式风力发电机生产制造基地。具备交流电机年产1200万千瓦，永磁风力发电机年产2000台的生产能力，开发生产的精品电机和工业发电机达到行业先进水平。



XEMC Motor Division has six workshops, among which the wind turbine generator set workshop is the world's largest production base for permanent-magnetic direct-driven wind turbine generator set. With production and operation area of 133,737 square meters, its annual outputs of AC motors and permanent-magnetic wind turbine generator sets are 1.2 million kW and 2000 sets respectively. The high-quality electric machines developed and produced have reached leading level in the industry.



世界一流的电机制造设备 ▶ World-Class Electric Machine Manufacturing Equipment



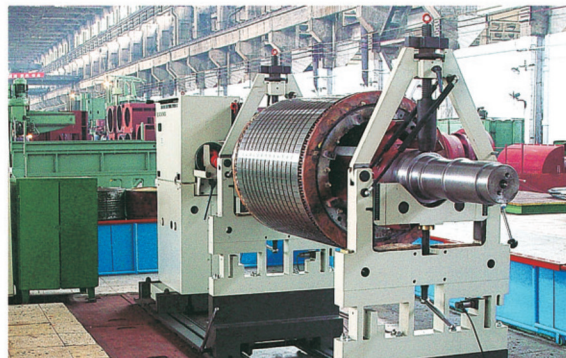
从法国引进的线圈自动涨型机
Automatic coil expansion machine introduced from France



从瑞士引进的自动包带机
Automatic taping machine introduced from Swiss



XHZ2925-10 定梁动柱式龙门加工中心
XHZ2925-10 fixed-beam and moving-column gantry machining center CNC



HM60U 卧式硬支承平衡机
HM 60U horizontal hard bearing balancing machine

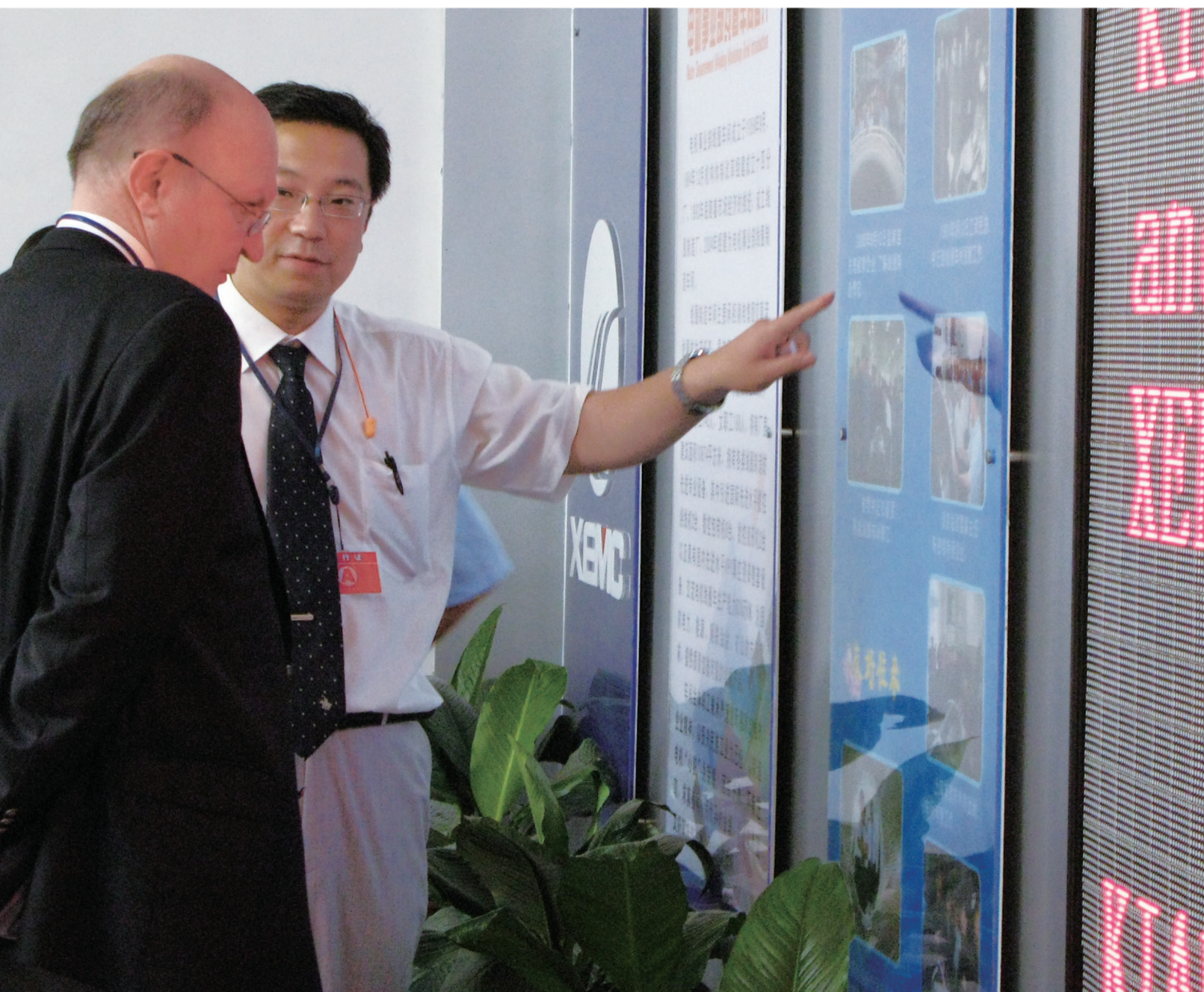


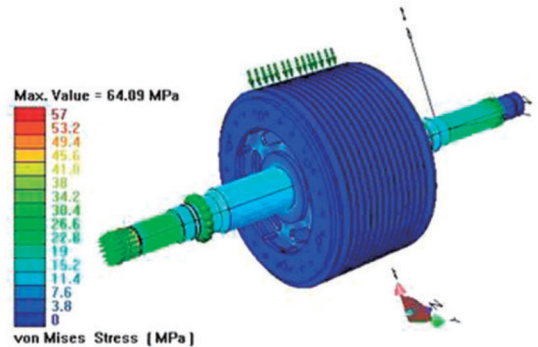
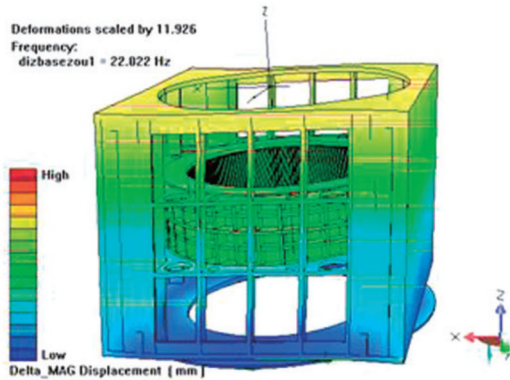
4000KN 双点闭式冲压机自动生产线(德国)
Automatic production line for 4000kN dual-point closed punching machine (Germany)



Φ6000 真空压力浸漆设备
Φ6000 Vacuum pressure impregnation (VPI) equipment

一流的核心研发技术 ▶
Best-in-class core development technology





先后引进、消化美国西屋公司、GE、ABB、西门子、日立等公司的先进技术，通过再创新，在新产品、新技术、新工艺与世界著名公司的研发基本实现同步，被认定为国家企业技术中心和国家级高技术产业基地。事业部现有工程技术人员422人，真中高级工程师35人，高级技师20人；国家级专家2人，享受国家技术津贴5人，全国技能大师2人。拥有先进的信息化研发平台(CAD、PDM、CRM、ERP、MES等)和各类一流的分析、设计软件(AnSoft、Ansys、Starcd等)。相继开发成功了1000MW火电站大型辅机电机、变频调速电机、大型低速永磁同步电机、大型紧凑型电机、高效节能电机、防爆电机、贯流泵电机、风力发电机、核主泵电机、工业发电机等；已形成2MW、2.5MW、3MW、3.6MW、5MW等直驱型风电产品的系列化研制能力，并在工业发电机、环保低噪音电机、高功率密度电机、大型高速电机等产品研发上取得突破性成果。

Motor Division has introduced and digested advanced technologies from Westinghouse, GE, ABB, Siemens, Hitachi etc. and has been basically synchronized with world-famous companies in terms of new products, technology and process through re-innovation. It has been determined as national enterprise technology center and national high-tech industrial base. Motor Division has 422 engineering technicians, among which 35 are senior engineers, 20 senior technicians, 2 state-level experts, 5 experts enjoying special government allowance for technology and 2 state-level skill masters. It has advanced informatization R&D platforms (CAD, PDM, CRM, ERP, MES etc.) and best-in-class analysis and design software (AnSoft, Ansys, Starcd etc.), and has successfully developed 1000MW large-sized auxiliary motor for power station, variable-frequency and variable-speed motor, large-sized low-speed permanent magnet synchronous motor, large-sized compact motor, high-efficiency energy-saving motor, explosion-proof motor, tubular pump motor, wind turbine generator set, nuclear main pump motor, industrial electric generator etc.. The R&D and production capabilities for series of direct-driven wind power products such as 2MW, 2.5MW, 3MW, 3.6MW, 5MW has been obtained and significant breakthroughs have been made in the research and development of industrial electric generator, environment-friendly low-noise motor, high-power density motor, large-sized high speed motor etc..

国内首台 5 兆瓦永磁直驱海上风力发电机

Ceremony of China's first 5MW offshore permanent magnet direct wind generator off the

海上风力发电技术与检测国家重点实验室授

and board-awarding of offshore wind generation technology and testing State Ke

主办单位：湘潭电机股份有限公司

中国 · 湖南 · 湘潭

二〇一〇年十月二十一日



可靠的质量保障体系 ▶

Reliable Quality Assurance System

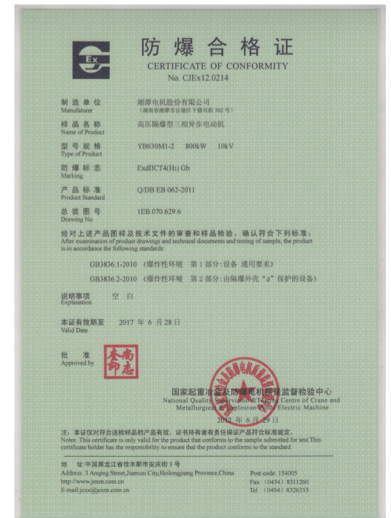
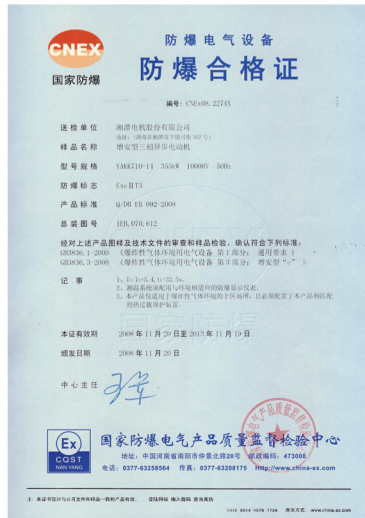
执行国家 ISO9001 质量体系、ISO14001 环境管理体系和 OHSAS18001 职业健康安全体系标准，拥有完备的专业试验及检测平台，具有模拟现场满负荷运行试验能力。先后被认定为“湖南省大中型机电产品质量监督检验中心”、“风力发电技术国家重点实验室”、“国家能源风力发电机研发（实验）中心”、国家唯一的“海上风力发电技术与检测国家重点实验室”、国家批准筹建的“国家风电设备质检中心”。已取得 XE72、XE82、XE93、2MW、2.5MW、5MW 永磁同步风力发电机的欧洲 CE 认证书，是西门子、日立、ABB、阿尔斯通、荏原博泵、科孚德、达涅利、KSB、FLOWSEVER 等公司的合格供方。

XEMC complies with ISO9001 Quality System, ISO14001 Environmental Management System and OHSAS18001 Occupational Health and Safety Management System and has well-established, professional test and inspection platforms, which can simulate on-site operation at full load. XEMC has been determined as “Hunan Quality Supervision and Test Center for large and Medium-sized motors and Electric Control Products”, “State Key Laboratory of Wind Power Technology”, “National Energy Wind-driven Generator R&D (Experiment) Center”, Unique “Offshore Wind Power Generation Technology and Testing National Key Laboratory” and state-approved “National Wind Power Equipment Quality Supervision and Inspection Center” under preparation. Permanent Magnet Synchronous Wind Power Generator sets of XE72, XE82, XE93, 2MW, 2.5MW and 5MW have achieved Europe CE certification. And we are qualified supplier for Siemens, Hitachi, ABB, Alstom, Ebara Boshan Pumps, Converteam, Danieli, KSB, Flowsever etc..

下线暨
assembly line
牌仪式
ey Laboratory

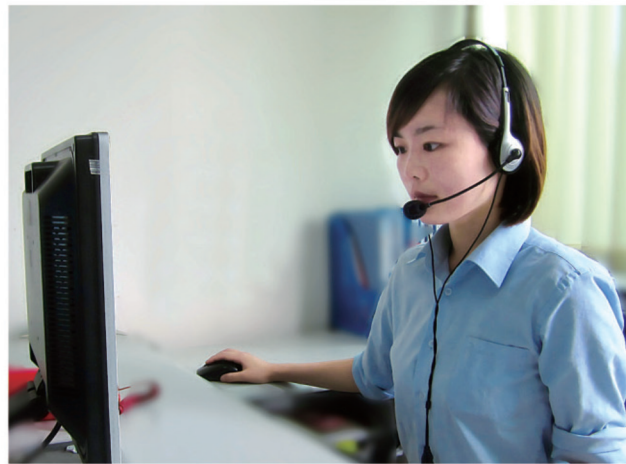


ABB 合格供应商证书
Certificate of Qualified Supplier for ABB





全方位的客户服务 ▶ All-round Customer Service



以科学严谨的态度、精益求精的精神，高标准、高质量和高品质的售后服务赢得用户的信赖，严格履行对用户做出的承诺。目前，除西藏、台湾以外，事业部已建立23个办事处，售后服务网点已覆盖全国。常年配备服务工程师，客户服务8小时内到达现场。

With a rigorous scientific attitude and continuous improvement spirit, we enjoy trust from customers and strictly fulfill our commitments to customers. At present, Motor Division has set up 23 offices except Tibetan and Taiwan, with after-sales service network covering all over the country. After-sales engineers may reach the site within eight (8) hours upon customers' request.

订货注意事项

尊敬的客户：

您订货时除了需提供您所需的电机型号的基本参数外，还需注意如下一些问题，请务必认真阅读以下项次，以确保您的需求能够得到最满意、最迅速的答复。如没有提出特殊要求，我公司将默认按国标及我公司标准生产。

Dear Customers,

When placing an order, please note the following except providing the basic parameters of your selected motor. Please carefully read the following items to make sure that your demands are responded most satisfactorily and quickly. If no special requirements are mentioned, production will be made in accordance with national standards and our enterprise standards.

- 1 噪声如果有特殊要求须提供给我们。(详见噪声国家标准)
Please specify your special requirement on noise (if any). (See national standard for noise.)
- 2 振动如果有特殊要求须提供给我们(标准值为：振幅0.037mm；振速2.3 mm/s,详见振动国家标准)
Please specify your special requirement on vibration (if any). (Standard: amplitude 0.037mm, velocity 2.3mm/s; see national standard for vibration)
- 3 启动次数如果有特殊要求须提供给我们(标准为冷态2次，热态1次)
Please specify your special requirement on number of starts (if any). (Standard: twice at cold state; once at hot state.)
- 4 旋转方向必须告知我们(标准为从电机轴伸端往电机方向看为顺时针，电机必须注明旋向)
Please specify your special requirement on direction of rotation (if any). (Standard: clockwise, viewed from motor shaft extension end; direction of rotation must be indicated for high-efficiency energy-saving motor.)
- 5 电机负载类型请提供给我们(如风机；水泵；磨机；破碎机；压缩机；轧钢机；盘磨机等)
Please specify types of driven equipment of motors. (e.g. water pump, mill, crushing machine, compressor, rolling mill, disc mill.)
- 6 负载转动惯量如果有特殊要求须提供给我们。
Please specify your special requirement on moment of inertia of the load (if any).
- 7 传动方式是什么请告知我们。(如带液力耦合器或带齿轮箱或直接连接)
Please specify types of drive (e.g. with fluid coupling or gearbox or direct-connected).
- 8 联轴形式是什么请告知我们。(如联轴器或者皮带轮，皮带张力是多少也须告知)
Please specify types of coupling (e.g. coupling and belt pulley; belt tension must be indicated.)
- 9 电机上是否需提供编码器接口？
Please specify whether installation location for encoder should be reserved on motor.
- 10 您所需电机是否在高原使用？(电机运行海拔超过1000米需特殊设计)
Please specify whether the motor is used in plateau. (Motors with installation altitude over 1000m are subject to special design.)
- 11 电机运行的环境温度是多少请告知我们。
Please specify the ambient temperature of the motor.
- 12 电机是否在湿热带地区使用？
Please specify whether the motor is used in humid tropical zone.
- 13 电机是否在户外使用？
Please specify whether the motor is used outdoor.
- 14 电机是否在海边使用？
Please specify whether the motor is used near the sea.
- 15 防腐是否有要求？(如F1轻度腐蚀；F2中度腐蚀；F3强腐蚀)
Please specify requirements for anti-corrosion (if any). (e.g. F1 for low corrosivity, F2 for medium corrosivity, F3 for high corrosivity.)
- 16 轴承采用何种型式？(如滚动轴承或者滑动轴承)是否需进口轴承？(□SKF □FAG □NSK □国产)
Please specify types of bearings. (e.g. rolling or sliding bearing). Please specify whether imported bearings are needed. (□SKF □FAG □NSK □Domestic)
- 17 轴承是否承受推力？
Please specify whether bearings bear thrust.

全国统一客服热线 Nationwide customer service hotline: 400-809-6906
网址 Website: [Http: www.xemc.com.cn](http://www.xemc.com.cn)

- 18 轴承是否有绝缘要求？
Please specify insulation requirements for bearings.
- 19 是否需要我们提供稀油站？
Please specify whether lubrication device needs to be provided by us.
- 20 如果需要稀油站是否有特殊要求？（无要求即是采用国产元件）
If required, please specify special requirements for the lubrication device (if any). (Home-made device will be used if there is no requirements.)
- 21 您所需电机是否备品电机？是的话请提供我公司原电机的生产序号。
Is the required motor standby motor? If yes, please indicate the serial number of the original motor.
- 22 中性点是否需要引出？
Please specify whether the neutral points need to be led out.
- 23 是否需要CT？如果需要CT安装位置在主出线线盒还是中性点出线盒？
Please specify whether CTs are needed. If yes, please indicate their installation position, for example, in the main terminal box or in the neutral point terminal box.
- 24 如果需要CT，数量是多少？
If CTs are needed, please specify the quantity.
- 25 是否需要加装防潮加热器？
Please specify whether a space heater is needed.
- 26 是否需要加装测振传感器？
Please specify whether vibration sensors are needed.
- 27 测温元件是否有特殊要求？
Please specify special requirement for temperature detectors (if any).
- 28 转子鼠笼材料是否有特殊要求？（如铸铝、铜排、梯形铜排）
Please specify special requirement for material of squirrel-cage rotor (if any). (e.g. cast aluminum, copper bar and trapezoid copper bar)
- 29 油漆颜色是否需要指定？（我公司默认颜色为室内“深豆绿”、室外为“淡灰”，其它参考本资料附件的“油漆颜色”）
Does paint color need to be specified? (Our standard: “bottle pea green” for indoor, “light gray” for outdoor; for others, please refer to the attached “Paint Color”)
- 30 电机是否需要双轴伸？
Is double-shaft extension necessary for the motor?
- 31 请明确出线盒位置(标准是从电机轴伸端往电机方向看出线盒安装在右边)
Please specify the location of terminal boxes. (Standard: on the right side, viewed from shaft extension end.)
- 32 电机最大力矩倍数如果有特殊要求须提供给我们。
Please specify special requirement for ratio of max. torque to rated torque of the motor (if any).
- 33 电机启动力矩倍数如果有特殊要求须提供给我们。
Please specify special requirement for ratio of starting torque to rated torque of the motor (if any).
- 34 电机启动电流倍数如果有特殊要求须提供给我们。
Please specify special requirement for ratio of starting current to rated current of the motor (if any).
- 35 功率 $\leq 355\text{kW}$ 的高效电机虽不在财政部补贴范围内，但建议客户仍然采用高效电机。
Although high-efficiency motors with power less than or equal to 355kW are not covered by allowance issued by China's Ministry of Finance, it is recommended that high-efficiency motors should still be selected.
- 36 中心高 $\leq H710$ 的高效电机一律全部采用磁性槽楔。
Magnetic slot wedge should be used for all high-efficiency motors with shaft height less than or equal to 710.

YX YXKS YXKK 6kV系列高效高压三相异步电动机

YX, YXKS and YXKK Series 6kV High-efficiency High-voltage Three-phase Asynchronous Motor



一、概述

YX、YXKS、YXKK 6kV系列高效高压三相异步电动机是我公司21世纪的最新产品，积累了我公司60多年长期的高压三相异步电动机系列设计制造的经验，开发出的新一代高效节能电机产品，可与普通Y系列高压三相异步电机互换，提高企业的运行效益，节能减排。

本系列电动机的功率等级和安装尺寸及公差均符合国家标准GB/T755《旋转电机定额和性能》国际电工委员会标准IEC34-1《旋转电机定额和性能》和GB/T13957及机械行业标准JB/T12728、JB/T12730等。能效等级执行标准GB30254-2013的2级能效。

本系列电动机的外壳防护等级根据GB/T4942.1和IEC34-5《旋转电机外壳防护等级》的标准分别有IP23、IPW24、IP44和IP54四种。如果用户需要其它防护等级可另行供货。

本系列电动机的冷却方法根据GB/T1993和IEC34-6《旋转电机冷却方法》的标准分别有IC01、IC81W、IC611、IC616。如果用户需要其它冷却方法可另行供货。

本系列电动机的结构及安装型式为IMB3(卧式带底脚)，符合GB/T997和IEC34-7《电机结构及安装型式代号》的规定。

1. Overview

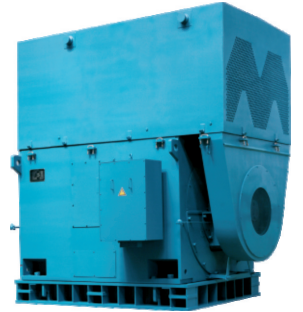
YX, YXKS and YXKK series 6kV high-efficiency high-voltage three-phase asynchronous motor, our latest product in the 21st century, is a new generation of high-efficiency energy-saving motor products developed by our accumulated experience in design and manufacture of high-voltage three-phase asynchronous motor for over 60 years and interchangeability with ordinary Y-series high-voltage three-phase asynchronous motor can enhance enterprise operating efficiency and fulfill energy saving and emission reduction.

The power rating, mounting dimension and tolerance of this series of motor comply with national standard GB/T755 Rotating electrical machines--Rating and performance, standard of international electrotechnical commission IEC34-1 Rotating electrical machines--Rating and performance, GB/T13957 and machinery industry standards such as JB/T12728, JB/T12730. The energy efficiency grade shall be in accordance with 2 of GB30254-2013.

In respect of degree of protection provided by enclosure, this series of motors are of IP23, IPW24, IP44 and IP54 as per GB/T4942.1 and IEC34-5 Rotating Electric Machines: Degrees of Protection provided by enclosure. Motors with other degrees of protection can be supplied by separate agreement if requested by users.

In respect of method of cooling, this series of motors are of IC01, IC81W, IC611 and IC616 as per GB/T1993 and IEC34-6 Rotating Electric Machines: Methods of Cooling. Motors with other methods of cooling can be supplied by separate agreement if requested by users.

In respect of type of construction and mounting arrangement, this series of motors are of IMB3 (horizontal, with footing), which complies with requirements in GB/T997 and IEC34-7 Rotating Electric Machines-Classification of Types of Construction and Mounting Arrangements and Terminal Box Position for (IM Code).



二、优势特点

1. 优化的电磁设计

本系列电动机应用了有限元方法分析电磁性能、发热及机械应力和变形并进行了电磁优化设计，对尺寸、气隙、槽配合及槽形进行了全面优化，电机的尺寸达到合理的匹配，电机的性能达到最佳。

2. 低谐波绕组

本系列电动机采用低谐波绕组，降低电机的定子铜耗和杂散损耗，提高电机的运行效率。

3. 高强度磁性槽楔

我公司经过长期研究，采用高强度磁性槽楔，稳定的槽楔紧固工艺和材料，成功地解决了磁性槽楔脱落的问题，提高了电机的电气性能。

4. 优化的通风冷却系统

采用后倾离心式风扇，轴流风扇等，优化电机内、外通风系统，提高冷却效果，降低电机（特别是高速电机）的通风损耗，降低通风噪音，提高电机效率。

5. 绝缘系统

本系列采用各种性能得到全面提升的绝缘系统，电压特性、温度特性、弯曲强度、击穿电压试验、热老化电老化试验均表明本系列绝缘系统达一流水平。本系列采用优质云母带，环保浸渍树脂并在数控绕线机、胀型机及包带机上完成线圈制作的每道工序，最后经VPI处理。因此绝缘性能可靠，机械强度高，防潮能力强。

6. 高效率

本系列电机的效率满足GB30254-2013的2级能效要求，为真正意义上的高效率电机，可大幅度提高客户的运行效益，比3级能效产品能为用户节电20%以上，为国家节能惠民工程产品。

2. Scope of application

1) Optimized electromagnetic design

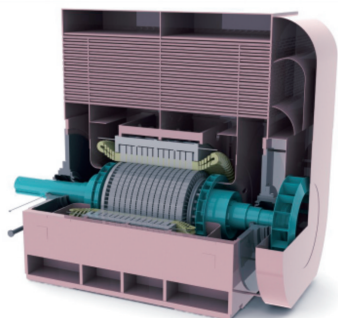
This series of motors use finite element method to analyze electromagnetic performance, heating, mechanical stress and deformation; and the motors' dimensions have been reasonably matched and performance has been maximized to the highest level through comprehensively optimizing not only electromagnetic design, but also dimensions, air gap and slot combination and shape.

2) Low harmonic winding

Low harmonic winding are adopted in this series of motors, which can reduce stator copper loss and stray loss, thus enhance operation efficiency.

3) High-strength magnetic slot wedge

It takes a long period of research for Motor Division to solve dropping out of slot wedge and improve the motor electrical performance by employing high-strength magnetic slot wedge and adopting a mature and stable slot wedge fastening process and materials.



4) Optimized ventilation cooling system

The motors use backward centrifugal fans, axial flow fans etc., which can maximize internal and external ventilation system, improve cooling effect, reduce ventilation loss (esp. for high-speed motor), lower ventilation noise and enhance efficiency.

5) Insulation system

This series of motors adopt an insulation system with various performances comprehensively improved; voltage characteristics, temperature characteristics, bending strength, breakdown voltage test, heat and electrical aging tests all prove that this series insulation system has achieved world-class level. The motors are excellent in insulation performance, mechanical strength and moisture resistance, since high-quality mica tape and environment-friendly impregnating resin are adopted, every process of coil fabrication is completed in CNC coil winding machine, expanding machine and taping machine, and at last VPI treatment is done.

6) High efficiency

The efficiency of this series of motors shall meet requirements of level two energy efficiency of GB 30254-2013. This series of motors can massively increase operation benefits to customers and save more than 20% electricity for users. Composed with 3 high-efficiency products. And they are products for national project of energy-saving and benefiting the people.

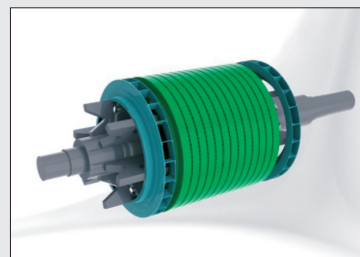
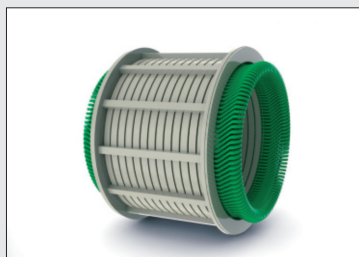
三、使用范围

本系列电动机可用于驱动各种通用机械如压缩机、通风机、水泵、切削机床、运输机械及其它机械设备，在矿山、机械行业、石化行业、发电厂等各种工矿企业中作原动机使用。用以驱动大转动惯量的鼓风机、磨煤机、轧钢机、卷扬机、破碎机、皮带机等机械的电动机应在订货时提供有关技术资料，签订技术协议，作为电机特殊设计的依据，并选用派生系列的专用电动机，以确保电机可靠运行。

3.Range of Application

This series of motor can be used to drive various universal machines such as compressor, ventilating blower, water pump, cutting machine tool, conveying machinery and other mechanical equipment and be used as prime motors for various industrial and mining enterprises in mine, machinery industry, petrochemical industry, power generation plant etc.. To ensure reliable operation of motors used to drive equipment with heavy moment of inertia such as air blower, coal mill, rolling mill, winding engine, belt conveyor, relevant technical data and technical specification, acted as the basis for special design of the motors, need to be provided and signed respectively when placing orders and dedicated motor series derived should be selected.

电动机正常工作基本条件：





- a 海拔不超过1000m;
- b 最高环境空气温度不超过40℃；最低环境空气温度对采用滚动轴承的电动机为-15℃，对采用滑动轴承的电动机为5℃；对YXKS系列电动机为5℃；
- c 对YXKS系列电动机，冷却器入口处冷却水温度不超过33℃，最低温度为5℃；
- d 最湿月月平均最高相对湿度为90%，同时该月月平均最低温度不高于25℃；
- e 电源频率为50Hz±1%；
- f 工作电压变化范围不大于额定电压±5%；
- g 电动机定额为连续工作制S1.

Basic Conditions for Normal Operation of Motors:

- a. Altitude: not higher than 1000m;
- b. Maximum ambient temperature: not higher than 40℃; minimum ambient temperature: 15℃for motors with rolling bearings, 5℃for those with sliding bearings; 5℃for YXKS series motors;
- c. For YXKS series motors, cooling water inlet temperature for cooler: not higher than 33℃, minimum temperature: 5℃;
- d. In the most humid month, monthly average maximum relative humidity: 90%; and monthly average minimum temperature of that month: not higher than 25℃;
- e. Power supply frequency: 50Hz±1%;
- f. Working voltage: not greater than ±5% of rated voltage;
- g. Performance rating of motor: continuous duty S1.

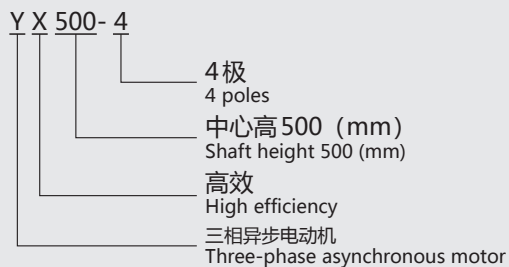
四、型号说明

电动机型号按GB4831的规定由产品代号、规格代号二部分依次排列组成。产品代号由电机系列代号表示，含义如下：

4.Designation

Designation consists of product code and specification code as stipulated in GB4831. Product code is represented by motor series code with meaning as follows:

示例 Example of designation:





五、结构说明

YX为基本系列，防护等级为IP23，冷却方法为IC01。将其机座顶部防护罩拆去，并安装不同的防护罩（或冷却器）即可派生各种不同防护等级及冷却方法的电机，如YXKS(空-水冷却)、YXQF（气候防护）、YXKK(空-空冷却)等系列电机。

电动机采用国际上流行的箱式结构，机座和端盖均由钢板焊接制成，刚性好、重量轻、拆下防护罩（或冷却器）后可以观察和触及电机内部，便于电动机的安装、维修。

定子采用外压装结构。定子绕组采用F级绝缘材料和防晕材料，绕组端部固定采用特殊绑扎工艺、牢固可靠，整个定子采用真空压力浸渍F级无溶剂漆（VPI）处理。由此，电动机具有优良可靠的绝缘性能和防潮、抗冲击能力。本系列电动机H355~H710均采用磁性槽楔，不接受要求非磁性槽楔订货。

本系列电动机鼠笼转子大部分采用铜条转子，鼠笼铜条转子采用先进可靠的焊接工艺，并经槽内紧固处理。运行可靠，少量采用铸铝转子。

轴承有滚动轴承和滑动轴承两种型式，依电动机功率大小及转速而定，其基本形式的防护等级为IP44。如电机具有较高的防护等级时，轴承的防护等级也随之提高。

采用滚动轴承结构的电机均有不停机加油和排油装置，并配备专用加油工具。

主出线盒为密封结构，防护等级为IP54。一般装于电机右侧（从轴伸端看），根据用户需要也能装于左侧。出线盒的进线孔可朝上、下、左、右四周转换。盒内有单独的接地端子。

二极电机轴承采用滚动轴承（H355~450）或滑动轴承（H500以上）结构，滑动轴承采用油环和压力油循环复合润滑方式。

本系列电机的内、外风扇均有方向性，电机只能按指定旋向旋转。

二极电机外挂风机（冷却方式IC616）空—空冷却结构，需要低压电源。

5. Structure description

YX is basic motor series, with degree of protection IP23 and method of cooling IC01. Motors with various degrees of protection and methods of cooling can be derived by removing the protective covers at the top of motor frame and installing different protective covers (or coolers), such as YXKS (air-water cooling), YXQF (weather-proof), YXKK (air-air cooling) series motors.

The motor is designed with international popular box-type structure. The frame and end cover are welded by steel plates, with good rigidity and light weight. The internal part of the motor can be observed and accessed by removing the protective cover (or cooler) to facilitate the installation and repair & maintenance of the motor.

The stator is of externally laminated pressed structure. The stator winding uses Class F insulating material and anti-corona material. The winding overhang, fixed with special binding process, is reliable and secure. The entire stator is vacuum pressure impregnated (VPI) with Class F non-solvent varnish. Therefore, the motor is excellent in insulation performance, moisture resistance and anti-impact ability. This series of motors with shaft height H355~H710 all adopt magnetic slot wedge and any orders requiring the use of non-magnetic slot wedge are not acceptable.



Most of squirrel-cage rotors of this series of motors are made of copper bars. The squirrel-cage copper bar rotor is welded with advanced, reliable technology and treated by fastening within slot, thus the motor can operate reliably. Only a few are made of cast aluminum.

According to the output and speed, bearing has two types: rolling bearing and sliding bearing, with basic degree of protection IP44. If a motor is designed with a higher degree of protection, the degree of protection of the bearing would be increased correspondingly.

Motors with rolling bearing structure are provided with non-stop oil filling and drain device and equipped with oil filling tools. 2-pole motors are designed with rolling bearing (H355~H450) or sliding bearing (H500 and above) structure. The sliding bearing is lubricated with combined oil ring and forced oil circulation.

The internal and external fans of this series of motors are non-reversible and motors can only rotate according to specified direction of rotation.

The external fan of a 2-pole motor (method of cooling: IC616) with air-air cooling structure needs a low-voltage power source.

The main terminal box is of sealed structure, with degree of protection IP54. Generally, it is mounted on the right side of motor (viewing from shaft extension end), but it can also be mounted on the left side according to users' requirement. The entry hole of the terminal box may be oriented up, down, left and right. A separate grounding terminal is provided within the box.

六、鼠笼异步电动机的起动 (YX、YXKS、YXKK系列)

鼠笼型异步电动机的转子采用了先进的计算技术来计算鼠笼转子的起动温升和应力。以防电动机因起动负载过重而导致电机早期损坏。

建议用户核查：(1) 被驱动机械设备转动部分的转动惯量（折算到电动机转速后）应不超过技术数据表中（负载J）项的数值；(2) 用户的电网应保证电动机在起动过程中的电机端电压不低于额定电压的85%；(3) 被传动机械的阻力矩特性为水泵、风机类阻力矩特性。

在上述条件下，电动机允许在实际冷状态下连续起动两次，电动机在两次起动之间为自然停车；或者在电动机热状态下起动一次。超出以上限制的再次起动电动机应在停车1小时以后。

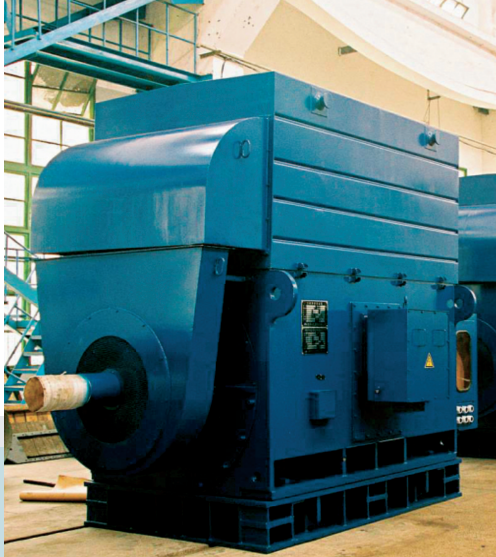
如果需要电动机传动的机械转动部分的转动惯量超过技术数据表中的（负载J）数值，或要求频繁起动电动机，或有可能带重负载起动的电动机，务必请事先和制造厂联系协商，以便特殊设计，确保电动机的可靠起动。

二极电机外挂风机空-空冷却型结构，需要起动冷却风机后才能起动主电机。

6. Starting of Squirrel-cage Asynchronous Motor (YX, YXKS, YXKK Series)

Advanced computing technology is used to calculate the temperature rise and stress of the rotor of squirrel-cage induction motor during starting to prevent early damage of the motor due to excessive starting load.

It is recommended that: (1) the moment of inertia of the rotating part of driven equipment (after converted into motor speed) should not exceed the value of load (J) in the technical data sheet; (2) the users' power grid should make sure that motor terminal



voltage should be no less than 85% of its rated voltage during starting; (3) the counter-torque characteristics of the driven machinery refers to those of water pump, blower and the like;

Under the above conditions, the motor is allowed to start twice successively at cold state with natural shutdown between two starts or once at hot state. Additional start exceeding this limit should be made 1 hour later after shutdown.

If the moment of inertia of the rotating part of motor-driven machinery exceeds the value of load (J) in the technical data sheet, or the motor is required to be started frequently, or the motor may be started under heavy load, please be sure to contact the manufacturer in advance for special design so as to ensure reliable startup of the motor.

For 2-pole motors of air-air cooling structure, with external fans, only after the cooling fans are started can the main motor be started.

七、订货须知

7. Instructions for Order Placement

请在订货时必须注明以下内容：

Please specify the following when placing an order:

- | | |
|--------------------------------------|------------------------------------------------------------------------------------------------|
| (1) 电机型号 Motor type: | (YX500-4) |
| (2) 额定频率 Rated frequency: | (50Hz) |
| (3) 额定功率 Rated power: | (1000kW) |
| (4) 额定电压 Rated voltage: | (6kV) |
| (5) 极数 Number of pole: | (4极) |
| (6) 防护等级 Degree of protection: | (IP23) |
| (7) 冷却方法 Method of cooling: | (IC01) |
| (8) 安装型式 Mounting arrangement: | (IMB3) |
| (9) 旋转方向 Direction of rotation: | [顺时针方向 (面对电动机轴伸端看)]
clockwise (viewed from the shaft extension end) |
| (10) 出线盒位置 Position of terminal box: | [电动机右侧 (面对电动机轴伸端看)]
on the right side of the motor
(viewed from the shaft extension end) |



注意事项:

- a 核查被驱动机械设备转动惯量（折算到电动机的转速后），请查阅前述第六章：鼠笼型电动机的起动；
- b 如工作条件有变化或其它特殊要求，需另签订技术协议方可签订订货合同；
- c 样本内表中所列的技术性能数据均为保证值，可列入技术协议中作考核标准。
- d 本系列电动机H355~H710均采用磁性槽楔，不接受要求非磁性槽楔订货。
- e 本系列电机的内、外风扇均有方向性，订货时必须注明电机旋转方向。
- f 对进口件，我公司仅采购该品牌产品而不限产地。
- g 我公司仅提供电动机必需的备品备件，概不提供客户可在市场上采购到的标准的，额外的附件（如扳手、阀门等）。
- h 我公司可提供除本样本以外的YRX、YRXKK、YXL、YXKSL、YXKKL等高效高压三相异步电动机，需另签订技术协议方可签订订货合同。
- I 随着技术的进步和有关国内外标准的修改，样本内技术数据及尺寸有所变动，恕不另行通知，订货后请向我公司索取正式外形图。

Attention:

- a. Check the moment of inertia of the driven equipment (after converted into motor speed), please refer to Chapter 6: Starting of Squirrel-cage Motor;
- b. Any change in operating conditions or other special requirements shall be subject to a technical agreement before signing of contract.
- c. The technical performance data listed in tables in the catalog are guaranteed values, which can be listed into the technical specification as assessment standard.
- d. This series of motors with shaft height H355-H710 all adopt magnetic slot wedge and orders requiring the use of non-magnetic slot wedge are not acceptable.
- e. The internal and external fans of this series of motor are non-reversible and motors can only rotate according to specified direction of rotation.
- f. For imported parts, we only purchase the products of the brands, regardless of their origins.
- g. Only necessary spare parts are supplied, standard and additional accessories that can be purchased in the market are not supplied (such as spanner, valve);
- h. Besides the motors specified in the catalog, we can also supply YRX, YRXKK, YXL, YXKSL, YXKKL etc. high-efficiency high-voltage three-phase asynchronous motors, but separate technical specifications should be signed before the order contract.
- I. With technical improvement and amendment to and/or revision of related national and international standards, the technical data and dimensions in the catalog will be subject to change without prior notice. please request formal outline drawing from us after placing an order.

YX、YXKS、YXKK 6kV 系列高效高压三相异步电动机

YX, YXKS, YXKK Series 6kV High-efficiency High-voltage Three-phase Asynchronous Motor

► YX(IP23)、YXKS(IP44)系列6kV技术数据

Technical data for YX(IP23) and YXKS(IP44) Series (6kV)

型号 Type	额定功率 Rated Power (KW)	定子电流 Stator Current (A)	转速 Speed (A)	效率 Efficiency (%)	功率因数 Power Factor (COSφ)	最大转矩 Maximum Torque	堵转转矩 Locked-rotor Torque	堵转电流 Locked-rotor Torque	年节电量 Annual Capacity Saving (kWh)	重量 Weight (kg)	
						额定转矩 Rated Torque T_M/T_N	额定转矩 Rated Torque T_{st}/T_N	额定电流 Rated Current I_{st}/I_N		YX	YXKS
355-2	220	26.4	2958	93.3 (92.0)	0.86	1.8	0.6	7.0	26655	1790	2130
	250	29.9	2955	93.4 (92.1)	0.86	1.8	0.6	7.0	26598	1840	2180
	280	33.5	2955	93.6 (92.3)	0.86	1.8	0.6	7.0	33706	1890	2230
	315	37.5	2956	93.9 (92.7)	0.86	1.8	0.6	7.0	34740	1930	2270
	355	42.2	2956	94.1 (93.0)	0.86	1.8	0.6	7.0	35697	2000	2340
	400	47.4	2957	94.5 (93.4)	0.86	1.8	0.6	7.0	39881	2070	2410
	450	53.2	2957	94.7 (93.7)	0.86	1.8	0.6	7.0	47032	2140	2480
400-2	500	58.2	2961	95.0 (94.0)	0.87	1.8	0.6	7.0	44793	2860	3230
	560	65.1	2961	95.1 (94.1)	0.87	1.8	0.6	7.0	50062	2910	3280
	630	73.2	2960	95.2(94.3)	0.87	1.8	0.6	7.0	50527	3010	3380
	710	82.4	2960	95.3 (94.4)	0.87	1.8	0.6	7.0	56823	3110	3480
	800	92.6	2960	95.6 (94.7)	0.87	1.8	0.6	7.0	63623	3230	3600
450-2	900	104	2965	95.7 (94.8)	0.87	1.8	0.6	7.0	71426	3550	3980
	1000	114.1	2964	95.8(94.9)	0.88	1.8	0.6	7.0	79195	3600	4030
	1120	127.7	2967	95.9 (95.0)	0.88	1.8	0.6	7.0	88513	3740	4170
	1250	142.2	2965	96.1 (95.2)	0.88	1.8	0.6	7.0	98374	3880	4310
500-2	1400	159.1	2975	96.2 (95.3)	0.88	1.8	0.6	7.0	109949	5370	5840
	1600	181.7	2974	96.3 (95.4)	0.88	1.8	0.6	7.0	125394	5590	6060
	1800	204.4	2974	96.3 (95.5)	0.88	1.8	0.6	7.0	125263	5810	6280
	2000	226.6	2974	96.5 (95.7)	0.88	1.8	0.6	7.0	138602	6030	6500
560-2	2240	253.6	2979	96.6 (95.8)	0.88	1.8	0.6	7.0	154912	8400	8900
	2500	279.8	2980	96.6 (95.9)	0.89	1.8	0.6	7.0	151124	8650	9150
	2800	313.1	2981	96.7 (96.0)	0.89	1.8	0.6	7.0	168907	8900	9400

注：1. 括号内效率值为国家标准值。

Note: 1. Efficiency values in brackets are national standard values.

2. 年节电量 (KWh) 为每年按8000h计算值。

2. Annual capacity of electricity saving is calculated according to 8000h/year.

► YX(IP23)、YXKS(IP44)系列6kV 技术数据
 Technical data for YX(IP23) and YXKS(IP44) Series (6kV)

型号 Type	额定功率 Rated Power (KW)	定子电流 Stator Current (A)	转速 Speed (A)	效率 Efficiency (%)	功率因数 Power Factor (COSφ)	最大转矩 Maximum Torque	堵转转矩 Locked-rotor Torque	堵转电流 Locked-rotor Torque	年节电量 Annual Capacity Saving (kWh)	重量 Weight (kg)	
						额定转矩 Rated Torque T_M/T_N	额定转矩 Rated Torque T_{sl}/T_N	额定电流 Rated Current I_{sl}/I_N		YX	YXKS
630-2	3150	351.8	2981	96.8 (96.1)	0.89	1.8	0.6	7.0	189627	10500	11100
	3550	396.5	2982	96.8 (96.1)	0.89	1.8	0.6	7.0	213706	10900	11500
	4000	446.3	2984	96.9 (96.2)	0.89	1.8	0.6	7.0	240297	11300	11900
710-2	4500	497	2980	96.9 (96.2)	0.9	1.8	0.6	7.0	270334	13800	14400
	5000	551	2982	97.0 (96.3)	0.9	1.8	0.6	7.0	299750	14500	15200
	5600	617	2985	97.1 (96.4)	0.9	1.8	0.6	7.0	335026	15400	16000
	6300	694	2983	97.1 (96.4)	0.9	1.8	0.6	7.0	379605	16200	16800
355-4	220	26.6	1485	93.7 (92.5)	0.85	1.8	0.8	6.5	24368	2010	2300
	250	30.2	1485	93.8 (92.6)	0.85	1.8	0.8	6.5	27631	2070	2360
	280	33.4	1483	93.9 (92.7)	0.86	1.8	0.8	6.5	30880	2080	2370
	315	37.5	1483	94.1 (92.9)	0.86	1.8	0.8	6.5	34592	2150	2440
	355	42.1	1484	94.3 (93.1)	0.86	1.8	0.8	6.5	38818	2220	2510
	400	47.4	1483	94.4 (93.3)	0.86	1.8	0.8	6.5	39966	2250	2540
400-4	450	53.2	1482	94.6 (93.5)	0.86	1.8	0.8	6.5	44771	2570	2930
	500	58.3	1482	94.8 (93.7)	0.87	1.8	0.8	6.5	49534	2680	3040
	560	65.2	1482	95.0 (93.9)	0.87	1.8	0.8	6.5	55244	2820	3180
	630	73.2	1483	95.2 (94.2)	0.87	1.8	0.8	6.5	56201	2900	3260
	710	82.3	1483	95.4 (94.4)	0.87	1.8	0.8	6.5	63071	3040	3400
450-4	800	92.7	1486	95.5 (94.6)	0.87	1.8	0.8	6.5	63757	3700	4170
	900	104.1	1487	95.6 (94.7)	0.87	1.8	0.8	6.5	71576	3890	4360
	1000	115.6	1487	95.7 (94.8)	0.87	1.8	0.8	6.5	79362	4000	4470
	1120	127.8	1486	95.8 (94.9)	0.88	1.8	0.8	6.5	88699	4120	4590
500-4	1250	142.4	1487	96.0 (95.1)	0.88	1.8	0.7	6.5	98580	4630	5130
	1400	159.5	1488	96.0 (95.2)	0.88	1.8	0.7	6.5	98039	4850	5350
	1600	180.0	1488	96.1 (95.3)	0.89	1.8	0.7	6.5	111811	5070	5570
	1800	202.3	1488	96.2 (95.4)	0.89	1.8	0.7	6.5	125525	5300	5800

注：1. 括号内效率值为国家标准值。

Note: 1. Efficiency values in brackets are national standard values.

2. 年节电量 (KWh) 为每年按 8000h 计算值。

2. Annual capacity of electricity saving is calculated according to 8000h/year.

YX、YXKS、YXKK 6kV 系列高效高压三相异步电动机

YX, YXKS, YXKK Series 6kV High-efficiency High-voltage Three-phase Asynchronous Motor

► YX(IP23)、YXKS(IP44)系列6kV技术数据

Technical data for YX(IP23) and YXKS(IP44) Series (6kV)

型号 Type	额定功率 Rated Power (KW)	定子电流 Stator Current (A)	转速 Speed (A)	效率 Efficiency (%)	功率因数 Power Factor (COSφ)	最大转矩 Maximum Torque	堵转转矩 Locked-rotor Torque	堵转电流 Locked-rotor Torque	年节电量 Annual Capacity Saving (kWh)	重量 Weight (kg)	
						额定转矩 Rated Torque T_M/T_N	额定转矩 Rated Torque T_{st}/T_N	额定电流 Rated Current I_{st}/I_N		YX	YXKS
560-4	2000	224.3	1488	96.4 (95.6)	0.89	1.8	0.6	6.5	138891	7000	7900
	2240	251.0	1488	96.5 (95.7)	0.89	1.8	0.6	6.5	155235	7300	8200
	2500	279.8	1489	96.6 (95.8)	0.89	1.8	0.6	6.5	172893	7700	8600
630-4	2800	313.4	1488	96.6 (95.9)	0.89	1.8	0.6	6.5	169258	9100	10200
	3150	351.8	1489	96.8 (96.1)	0.89	1.8	0.6	6.5	189627	9400	10500
	3550	396.5	1490	96.8 (96.1)	0.89	1.8	0.6	6.5	213706	9800	10900
710-4	4000	456.6	1492	96.9 (96.2)	0.87	1.8	0.5	6.5	240297	13000	13300
	4500	513.6	1492	96.9 (96.2)	0.87	1.8	0.5	6.5	270335	13500	13800
	5000	563.1	1492	97.1 (96.4)	0.88	1.8	0.5	6.5	299131	14200	14500
800-4	5000	563.1	1492	97.1 (96.4)	0.88	1.8	0.5	6.5	299131	15800	16500
	5600	630.6	1492	97.1 (96.4)	0.88	1.8	0.5	6.5	335027	16700	17500
	6300	708.7	1492	97.2 (96.5)	0.88	1.8	0.5	6.5	376127	17500	18300
	7100	798.7	1494	97.2 (96.6)	0.88	1.8	0.5	6.5	362958	18300	19100
900-4	7100	798.7	1495	97.2 (96.6)	0.88	1.8	0.5	6.5	362958	21700	22400
	8000	897	1495	97.4 (96.8)	0.88	1.8	0.5	6.5	407284	22800	23500
	9000	1009	1492	97.5 (96.9)	0.88	1.8	0.5	6.5	457252	23900	24600
355-6	220	27.6	985	93.5 (92.2)	0.82	1.8	0.8	6.0	26541	2190	2480
	250	31.3	985	93.7 (92.5)	0.82	1.8	0.8	6.0	27690	2280	2570
	280	34.6	985	93.9 (92.7)	0.83	1.8	0.8	6.0	30880	2380	2670
400-6	315	38.8	988	94.2 (93.0)	0.83	1.8	0.8	6.0	34518	2620	2980
	355	43.6	988	94.4 (93.2)	0.83	1.8	0.8	6.0	38736	2740	3100
	400	49.1	987	94.4 (93.3)	0.83	1.8	0.8	6.0	39966	2850	3210
	450	54.4	988	94.7 (93.6)	0.84	1.8	0.8	6.0	44675	2980	3340
	500	59.6	987	95.0 (93.9)	0.85	1.8	0.8	6.0	49325	3130	3490

注：1. 括号内效率值为国家标准值。

Note: 1. Efficiency values in brackets are national standard values.

2. 年节电量 (KWh) 为每年按8000h计算值。

2. Annual capacity of electricity saving is calculated according to 8000h/year.

► YX(IP23)、YXKS(IP44)系列6kV 技术数据
 Technical data for YX(IP23) and YXKS(IP44) Series (6kV)

型号 Type	额定功率 Rated Power (KW)	定子电流 Stator Current (A)	转速 Speed (A)	效率 Efficiency (%)	功率因数 Power Factor (COSφ)	最大转矩 Maximum Torque	堵转转矩 Locked-rotor Torque	堵转电流 Locked-rotor Current	年节电量 Annual Capacity Saving (kWh)	重量 Weight (kg)	
						额定转矩 Rated Torque T_M/T_N	额定转矩 Rated Torque T_{sl}/T_N	额定电流 Rated Current I_{sl}/I_N		YX	YXKS
450-6	560	66.7	990	95.1 (94.1)	0.85	1.8	0.8	6.0	50062	3600	4050
	630	74.9	990	95.2 (94.2)	0.85	1.8	0.8	6.0	56201	3710	4160
	710	84.3	989	95.4 (94.4)	0.85	1.8	0.8	6.0	63071	3830	4280
	800	94.8	990	95.5 (94.6)	0.85	1.8	0.8	6.0	63757	4050	4500
500-6	900	106.6	990	95.6 (94.7)	0.85	1.8	0.7	6.0	71576	4550	5050
	1000	118.3	990	95.7 (94.8)	0.85	1.8	0.7	6.0	79362	4760	5260
	1120	130.8	991	95.8 (94.9)	0.86	1.8	0.7	6.0	88699	4990	5490
	1250	145.7	991	96.0 (95.1)	0.86	1.8	0.7	6.0	98580	5150	5650
560-6	1400	163.2	991	96.0 (95.2)	0.86	1.8	0.7	6.5	98039	6550	7350
	1600	186.3	991	96.1 (95.3)	0.86	1.8	0.7	6.5	111811	6800	7600
	1800	209.4	991	96.2 (95.4)	0.86	1.8	0.7	6.5	125525	7150	7950
630-6	2000	232.1	992	96.4 (95.6)	0.86	1.8	0.7	6.5	138891	9750	9700
	2240	260.0	992	96.4 (95.7)	0.86	1.8	0.7	6.5	135971	9150	10100
	2500	289.9	993	96.5 (95.7)	0.86	1.8	0.7	6.5	173253	9550	10500
710-6	2800	324.3	993	96.6 (95.8)	0.86	1.8	0.6	6.5	193640	12800	13500
	3150	364.5	993	96.7 (96.0)	0.86	1.8	0.6	6.5	190021	13300	14000
	3550	410.8	993	96.7 (96.0)	0.86	1.8	0.6	6.5	214150	14000	14500
	4000	462.4	993	96.8 (96.1)	0.86	1.8	0.6	6.5	240796	14800	15300

注：1. 括号内效率值为国家标准值。

Note: 1. Efficiency values in brackets are national standard values.

2. 年节电量 (KWh) 为每年按 8000h 计算值。

2. Annual capacity of electricity saving is calculated according to 8000h/year.

YX、YXKS、YXKK 6kV 系列高效高压三相异步电动机

YX, YXKS, YXKK Series 6kV High-efficiency High-voltage Three-phase Asynchronous Motor

► YX(IP23)、YXKS(IP44)系列6kV技术数据

Technical data for YX(IP23) and YXKS(IP44) Series (6kV)

型号 Type	额定功率 Rated Power (KW)	定子电流 Stator Current (A)	转速 Speed (A)	效率 Efficiency (%)	功率因数 Power Factor (COSφ)	最大转矩 Maximum Torque	堵转转矩 Locked-rotor Torque	堵转电流 Locked-rotor Torque	年节电量 Annual Capacity Saving (kWh)	重量 Weight (kg)	
						额定转矩 Rated Torque T_M/T_N	额定转矩 Rated Torque T_{st}/T_N	额定电流 Rated Current I_{st}/I_N		YX	YXKS
800-6	3550	406	993	96.7 (96.0)	0.87	1.8	0.6	6.5	214150	16300	16600
	4000	457	993	96.8 (96.1)	0.87	1.8	0.6	6.5	240796	16900	17300
	4500	514.2	993	96.8 (96.1)	0.87	1.8	0.6	6.5	270896	17500	18100
	5000	570.1	994	97.0 (96.3)	0.87	1.8	0.6	6.5	299751	18800	18900
	5600	638.5	995	97.0 (96.3)	0.87	1.8	0.6	6.5	335721	19300	19800
900-6	5600	638.5	995	97.0 (96.3)	0.87	1.8	0.6	6.5	335721	23000	23800
	6300	718.4	995	97.1 (96.4)	0.87	1.8	0.6	6.5	376905	24000	24800
	7100	808.7	995	97.2 (96.5)	0.87	1.8	0.6	6.5	423890	25000	25800
	8000	908	995	97.3 (96.7)	0.87	1.8	0.6	6.5	408123	26000	26800
1000-6	9000	1022	994	97.4 (96.8)	0.87	1.8	0.6	6.5	456000	28400	29000
	10000	1134	994	97.5 (96.9)	0.87	1.8	0.6	6.5	508057	29400	30200
	11200	1269	995	97.6 (97.0)	0.87	1.8	0.6	6.5	571134	30700	31500
400-8	220	29.1	739	93.4 (92.1)	0.78	1.8	0.8	5.5	26598	2470	2830
	250	32.6	740	93.5 (92.2)	0.79	1.8	0.8	5.5	30160	2570	2930
	280	36.4	740	93.7 (92.4)	0.79	1.8	0.8	5.5	33634	2690	3050
	315	40.3	740	93.9 (92.7)	0.80	1.8	0.8	5.5	34741	2830	3190
	355	45.4	739	94.0 (92.8)	0.80	1.8	0.8	5.5	39068	2940	3300
450-8	400	51.1	742	94.2 (93.0)	0.80	1.8	0.8	5.5	43833	3600	4050
	450	56.7	742	94.3 (93.1)	0.81	1.8	0.8	5.5	49206	3720	4170
	500	62.7	742	94.8 (93.7)	0.81	1.8	0.8	5.5	49534	3870	4320
	560	69.2	742	94.9 (93.8)	0.82	1.8	0.8	5.5	55361	3990	4440
500-8	630	77.8	742	95.0 (93.9)	0.82	1.8	0.8	5.5	62149	4630	5130
	710	87.7	742	95.0 (94.0)	0.82	1.8	0.8	5.5	63606	4830	5330
	800	96.3	742	95.2 (94.2)	0.84	1.8	0.8	5.5	71366	5030	5530
	900	108.2	743	95.3 (94.3)	0.84	1.8	0.8	5.5	80118	5280	5780
560-8	1000	120.1	743	95.4 (94.4)	0.84	1.8	0.7	6.0	88832	6450	7250
	1120	134.3	743	95.5 (94.5)	0.84	1.8	0.7	6.0	99283	6700	7500
	1250	149.8	744	95.6 (94.7)	0.84	1.8	0.7	6.0	99411	7000	7800

注：1. 括号内效率值为国家标准值。

Note: 1. Efficiency values in brackets are national standard values.

2. 年节电量 (KWh) 为每年按 8000h 计算值。

2. Annual capacity of electricity saving is calculated according to 8000h/year.

► YX(IP23)、YXKS(IP44)系列6kV技术数据
 Technical data for YX(IP23) and YXKS(IP44) Series (6kV)

型号 Type	额定功率 Rated Power (KW)	定子电流 Stator Current (A)	转速 Speed (A)	效率 Efficiency (%)	功率因数 Power Factor (COSφ)	最大转矩 Maximum Torque	堵转转矩 Locked-rotor Torque	堵转电流 Locked-rotor Current	年节电量 Annual Capacity Saving (kWh)	重量 Weight (kg)	
						额定转矩 Rated Torque T_M/T_N	额定转矩 Rated Torque T_{sl}/T_N	额定电流 Rated Current I_{sl}/I_N		YX	YXKS
630-8	1400	167.6	744	95.7 (94.8)	0.84	1.8	0.7	6.0	111107	8150	9100
	1600	191.3	744	95.8 (94.9)	0.84	1.8	0.7	6.0	126713	8450	9400
	1800	215.2	744	95.8 (95.0)	0.84	1.8	0.7	6.0	126579	8700	9650
	2000	238.7	744	96.0 (95.2)	0.84	1.8	0.7	6.0	140056	9200	10150
710-8	2240	263.9	746	96.1 (95.3)	0.85	1.8	0.6	6.5	156535	11700	12000
	2500	294.2	746	96.2 (95.4)	0.85	1.8	0.6	6.5	174340	12300	12700
	2800	329.2	746	96.3 (95.5)	0.85	1.8	0.6	6.5	194854	13000	13600
800-8	2800	325.3	745	96.3 (95.5)	0.86	1.8	0.6	6.5	194854	15900	16600
	3150	361.4	745	96.4 (95.6)	0.87	1.8	0.6	6.5	218754	16700	17300
	3550	406.9	745	96.5 (95.7)	0.87	1.8	0.6	6.5	246019	17200	18000
	4000	458	745	96.6 (95.8)	0.87	1.8	0.6	6.5	276629	17800	18700
900-8	4500	514.7	745	96.7 (95.9)	0.87	1.8	0.6	6.5	310561	22000	22900
	5000	571.3	745	96.8 (96.1)	0.87	1.8	0.6	6.5	300995	22900	23800
	5600	639.9	745	96.8 (96.1)	0.87	1.8	0.6	6.5	337114	23900	24700
1000-8	6300	719.1	745	96.9 (96.2)	0.87	1.8	0.6	6.0	378468	24700	25300
	7100	809.6	745	97.0 (96.3)	0.87	1.8	0.6	6.0	425646	25900	26600
	8000	910	745	97.2 (96.5)	0.87	1.8	0.6	6.0	477627	27300	28200
	9000	1023	745	97.3 (96.6)	0.87	1.8	0.6	6.0	536217	28800	29450
	10000	1136.7	745	97.3 (96.7)	0.87	1.8	0.6	6.0	510155	30200	31050
400-10	220	29.6	591	92.8 (91.3)	0.77	1.8	0.8	5.5	31159	2700	3060
	250	33.2	590	92.9 (91.5)	0.78	1.8	0.8	5.5	32940	2780	3140
	280	37.1	590	93.1 (91.7)	0.78	1.8	0.8	5.5	36733	2860	3220
450-10	315	41.1	592	93.3 (91.9)	0.79	1.8	0.8	5.5	41146	3400	3860
	355	46.2	592	93.5 (92.1)	0.79	1.8	0.8	5.5	46172	3500	3960
	400	51.2	592	93.9 (92.6)	0.80	1.8	0.8	5.5	47843	3650	4110
	450	57.6	592	93.9 (92.7)	0.80	1.8	0.8	5.5	49629	3840	4300

注：1. 括号内效率值为国家标准值。

Note: 1. Efficiency values in brackets are national standard values.

2. 年节电量 (KWh) 为每年按 8000h 计算值。

2. Annual capacity of electricity saving is calculated according to 8000h/year.

YX、YXKS、YXKK 6kV 系列高效高压三相异步电动机

YX, YXKS, YXKK Series 6kV High-efficiency High-voltage Three-phase Asynchronous Motor

► YX(IP23)、YXKS(IP44)系列6kV技术数据

Technical data for YX(IP23) and YXKS(IP44) Series (6kV)

型号 Type	额定功率 Rated Power (KW)	定子电流 Stator Current (A)	转速 Speed (A)	效率 Efficiency (%)	功率因数 Power Factor (COSφ)	最大转矩 Maximum Torque	堵转转矩 Locked-rotor Torque	堵转电流 Locked-rotor Torque	年节电量 Annual Capacity Saving (kWh)	重量 Weight (kg)	
						额定转矩 Rated Torque T_M/T_N	额定转矩 Rated Torque T_{st}/T_N	额定电流 Rated Current I_{st}/I_N		YX	YXKS
500-10	500	63.8	592	94.2 (93.0)	0.80	1.8	0.8	5.5	54791	4180	4680
	560	71.4	592	94.3 (93.1)	0.80	1.8	0.8	5.5	61235	4340	4840
	630	80.3	592	94.4 (93.2)	0.80	1.8	0.8	5.5	68742	4520	5020
	710	88.2	592	94.5 (93.4)	0.82	1.8	0.8	5.5	70788	4850	5350
	800	99.0	592	94.8 (93.7)	0.82	1.8	0.8	5.5	79255	5160	5660
560-10	900	111.3	594	94.9 (93.8)	0.82	1.8	0.7	6.0	88973	6250	6950
	1000	123.5	594	95.0 (93.9)	0.82	1.8	0.7	6.0	98649	6450	7150
	1120	138.2	594	95.1 (94.1)	0.82	1.8	0.7	6.0	100124	6600	7300
630-10	1250	153.8	594	95.4 (94.4)	0.82	1.8	0.7	6.0	111040	8250	9050
	1400	172.0	593	95.5 (94.5)	0.82	1.8	0.7	6.0	124103	8500	9300
	1600	196.6	593	95.5 (94.6)	0.82	1.8	0.7	6.0	127514	8800	9600
	1800	220.9	594	95.6 (94.7)	0.82	1.8	0.7	6.0	143152	9100	9900
710-10	2000	242	595	95.8 (94.9)	0.83	1.8	0.6	6.0	158391	12400	12700
	2240	270.8	595	95.9 (95.0)	0.83	1.8	0.6	6.0	177027	13000	13400
800-10	2500	294.8	595	96.0 (95.1)	0.85	1.8	0.6	6.0	197161	16600	17400
	2800	329.8	595	96.1 (95.2)	0.85	1.8	0.6	6.0	220359	17300	18100
	3150	370.7	595	96.2 (95.4)	0.85	1.8	0.6	6.0	219668	18200	19000

注：1. 括号内效率值为国家标准值。

Note: 1. Efficiency values in brackets are national standard values.

2. 年节电量 (KWh) 为每年按 8000h 计算值。

2. Annual capacity of electricity saving is calculated according to 8000h/year.

► YX(IP23)、YXKS(IP44)系列6kV技术数据
 Technical data for YX(IP23) and YXKS(IP44) Series (6kV)

型号 Type	额定功率 Rated Power (KW)	定子电流 Stator Current (A)	转速 Speed (A)	效率 Efficiency (%)	功率因数 Power Factor (COSφ)	最大转矩 Maximum Torque	堵转转矩 Locked-rotor Torque	堵转电流 Locked-rotor Current	年节电量 Annual Capacity Saving (kWh)	重量 Weight (kg)	
						额定转矩 Rated Torque T_M/T_N	额定转矩 Rated Torque T_{sl}/T_N	额定电流 Rated Current I_{sl}/I_N		YX	YXKS
900-10	3550	417.3	595	96.3 (95.5)	0.85	1.8	0.6	6.0	247046	21900	22800
	4000	469.7	595	96.4 (95.6)	0.85	1.8	0.6	6.0	277783	23000	23700
	4500	528.5	595	96.4 (95.6)	0.85	1.8	0.6	6.0	312505	23800	24600
	5000	586	596	96.6 (95.8)	0.85	1.8	0.6	6.0	345786	24800	25600
1000-10	5600	656.3	596	96.6 (95.8)	0.85	1.8	0.6	6.0	387280	26700	27400
	6300	737.5	596	96.7 (95.9)	0.85	1.8	0.6	6.0	434786	28100	28800
	7100	831.2	596	96.7 (95.9)	0.85	1.8	0.6	6.0	489997	29400	30200
	8000	935	596	96.9 (96.1)	0.85	1.8	0.6	6.0	549823	31100	31800
450-12	220	31.5	494	92.2 (90.6)	0.73	1.8	0.8	5.5	33711	3590	4040
	250	35.7	494	92.4 (90.9)	0.73	1.8	0.8	5.5	35718	3690	4140
	280	39.0	494	93.3 (91.9)	0.74	1.8	0.8	5.5	36575	3880	4330
	315	43.2	494	93.5 (92.1)	0.75	1.8	0.8	5.5	40969	3990	4440
500-12	355	48.7	495	93.6 (92.3)	0.75	1.8	0.8	5.5	42735	4280	4780
	400	54.7	494	93.9 (92.6)	0.75	1.8	0.8	5.5	47843	4460	4960
	450	61.5	494	93.9 (92.7)	0.75	1.8	0.8	5.5	49629	4600	5100
	500	64.6	495	94.3 (93.1)	0.79	1.8	0.8	5.5	54674	4800	5300
	560	72.3	494	94.6 (93.2)	0.79	1.8	0.8	5.5	61104	4940	5440
560-12	630	81.2	494	94.5 (93.3)	0.79	1.8	0.7	6.0	68596	6250	6950
	710	91.5	494	94.5 (93.4)	0.79	1.8	0.7	6.0	70788	6350	7050
	800	102.8	494	94.8 (93.7)	0.79	1.8	0.7	6.0	79255	6750	7450
630-12	900	115.5	494	94.9 (93.8)	0.79	1.8	0.7	6.0	88973	8150	8950
	1000	128.2	494	95.0 (93.9)	0.79	1.8	0.7	6.0	98649	8350	9150
	1120	143.6	494	95.0 (94.0)	0.79	1.8	0.7	6.0	100336	8600	9400
	1250	159.9	494	95.2 (94.2)	0.79	1.8	0.7	6.0	111510	8900	9700

注：1. 括号内效率值为国家标准值。

Note: 1. Efficiency values in brackets are national standard values.

2. 年节电量 (KWh) 为每年按 8000h 计算值。

2. Annual capacity of electricity saving is calculated according to 8000h/year.

YX、YXKS、YXKK 6kV 系列高效高压三相异步电动机

YX, YXKS, YXKK Series 6kV High-efficiency High-voltage Three-phase Asynchronous Motor

► YX(IP23)、YXKS(IP44)系列6kV技术数据

Technical data for YX(IP23) and YXKS(IP44) Series (6kV)

型号 Type	额定功率 Rated Power (KW)	定子电流 Stator Current (A)	转速 Speed (A)	效率 Efficiency (%)	功率因数 Power Factor (COSφ)	最大转矩 Maximum Torque	堵转转矩 Locked-rotor Torque	堵转电流 Locked-rotor Torque	年节电量 Annual Capacity Saving (kWh)	重量 Weight (kg)	
						额定转矩 Rated Torque T_M/T_N	额定转矩 Rated Torque T_{st}/T_N	额定电流 Rated Current I_{st}/I_N		YX	YXKS
710-12	1400	178.9	496	95.3 (94.3)	0.79	1.8	0.6	6.0	124627	11600	11900
	1600	201.9	496	95.3 (94.3)	0.80	1.8	0.6	6.0	142431	12100	12400
	1800	226.9	496	95.4 (94.4)	0.80	1.8	0.6	6.0	159898	12700	13050
800-12	1800	221.4	496	95.4 (94.4)	0.82	1.8	0.6	6.0	159898	15800	16500
	2000	245.5	496	95.6 (94.6)	0.82	1.8	0.6	6.0	176919	16250	17050
	2240	274.7	496	95.7 (94.7)	0.82	1.8	0.6	6.0	197732	16900	17700
	2500	306.2	496	95.8 (94.9)	0.82	1.8	0.6	6.0	197989	17700	18550
900-12	2500	306.2	496	95.8 (94.9)	0.82	1.8	0.6	6.0	197989	21200	21800
	2800	342.6	496	95.9 (95.0)	0.82	1.8	0.6	6.0	221283	22000	22700
	3150	384.6	496	96.1 (95.2)	0.82	1.8	0.6	6.0	247904	22800	23400
	3550	433	496	96.2 (95.3)	0.82	1.8	0.6	6.0	278800	23600	24100
1000-12	4000	487.9	496	96.2 (95.4)	0.82	1.8	0.6	6.0	278944	25700	26300
	4500	548.9	496	96.2 (95.4)	0.82	1.8	0.6	6.0	313812	26600	27300
	5000	608.6	496	96.4 (95.6)	0.82	1.8	0.6	6.0	347228	27500	28300
	5600	681.7	496	96.4 (95.6)	0.82	1.8	0.6	6.0	388896	28600	29300

注：1.括号内效率值为国家标准值。

Note: 1.Efficiency values in brackets are national standard values.

2.年节电量 (KWh) 为每年按8000h计算值。

2.Annual capacity of electricity saving is calculated according to 8000h/year.

► YXKK(IP44)、(IP54)系列6kV技术数据
 Technical data for YXKK(IP44) and (IP54) Series (6kV)

型号 Type	额定功率 Rated Power (KW)	定子电流 Stator Current (A)	转速 Speed (A)	效率 Efficiency (%)	功率因数 Power Factor (COSφ)	最大转矩 Maximum Torque 额定转矩 Rated Torque T_M/T_N	堵转转矩 Locked-rotor Torque 额定转矩 Rated Torque T_{sl}/T_N	堵转电流 Locked-rotor Current 额定电流 Rated Current I_{sl}/I_N	年节电量 Annual Capacity Saving (kWh)	重量 Weight (kg)
355-2	220	26.8	2966	93.1 (91.7)	0.85	1.8	0.6	7.0	28862	2260
	250	30.4	2966	93.2 (91.8)	0.85	1.8	0.6	7.0	32726	2300
	280	33.9	2966	93.4 (92.0)	0.85	1.8	0.6	7.0	36496	2370
	315	38.1	2967	93.7 (92.4)	0.85	1.8	0.6	7.0	37838	2440
	355	42.3	2967	93.9 (92.7)	0.86	1.8	0.6	7.0	39152	2510
400-2	400	47.5	2969	94.2 (93.0)	0.86	1.8	0.6	7.0	43833	3270
	450	53.3	2969	94.4 (93.3)	0.86	1.8	0.6	7.0	44962	3320
	500	59.1	2969	94.7 (93.6)	0.86	1.8	0.6	7.0	49639	3420
	560	66	2969	94.9 (93.8)	0.86	1.8	0.6	7.0	55361	3520
	630	73.3	2969	95.0 (94.0)	0.87	1.8	0.6	7.0	56439	3640
450-2	710	82.6	2970	95.1 (94.1)	0.87	1.8	0.6	7.0	63471	4050
	800	92.8	2968	95.3 (94.3)	0.87	1.8	0.6	7.0	71216	4100
	900	104.2	2970	95.5 (94.5)	0.87	1.8	0.6	7.0	79781	4240
	1000	115.8	2968	95.5 (94.6)	0.87	1.8	0.6	7.0	79696	4380
500-2	1120	129.6	2979	95.6 (94.7)	0.87	1.8	0.6	7.0	89072	6020
	1250	144.3	2980	95.8 (94.9)	0.87	1.8	0.6	7.0	98994	6240
	1400	159.6	2980	95.9 (95.0)	0.88	1.8	0.6	7.0	110641	6460
	1600	182.2	2979	96.0 (95.1)	0.88	1.8	0.6	7.0	126183	6680
560-2	1800	205	2980	96.0 (95.2)	0.88	1.8	0.6	7.0	126050	9350
	2000	227.3	2981	96.2 (95.4)	0.88	1.8	0.6	7.0	139472	9600
	2240	254.4	2982	96.3 (95.5)	0.88	1.8	0.6	7.0	155883	9850
630-2	2500	283.6	2981	96.4 (95.6)	0.88	1.8	0.6	7.0	173614	12200
	2800	317.6	2982	96.4 (95.6)	0.88	1.8	0.6	7.0	194448	12600
	3150	356.9	2983	96.5 (95.7)	0.88	1.8	0.6	7.0	218299	13000
	3550	401.9	2985	96.6 (95.8)	0.88	1.8	0.6	7.0	245508	13400
710-2	4000	447.2	2983	96.7 (95.9)	0.89	1.8	0.6	7.0	276054	15500
	4500	502.6	2984	96.8 (96.0)	0.89	1.8	0.6	7.0	309917	16300
	5000	557.9	2987	96.9 (96.1)	0.89	1.8	0.6	7.0	343639	17100
	5600	624.8	2985	96.9 (96.1)	0.89	1.8	0.6	7.0	384876	17900

注： 1. 括号内效率值为国家标准值。

Note: 1. Efficiency values in brackets are national standard values.

2. 年节电量 (KWh) 为每年按 8000h 计算值。

2. Annual capacity of electricity saving is calculated according to 8000h/year.

YX、YXKS、YXKK 6kV 系列高效高压三相异步电动机

YX, YXKS, YXKK Series 6kV High-efficiency High-voltage Three-phase Asynchronous Motor

► YXKK(IP44)、(IP54)系列6kV技术数据

Technical data for YXKK(IP44) and (IP54) Series (6kV)

型号 Type	额定功率 Rated Power (KW)	定子电流 Stator Current (A)	转速 Speed (A)	效率 Efficiency (%)	功率因数 Power Factor (COSφ)	最大转矩 Maximum Torque 额定转矩 Rated Torque T_M/T_N	堵转转矩 Locked-rotor Torque 额定转矩 Rated Torque T_{sl}/T_N	堵转电流 Locked-rotor Torque 额定电流 Rated Current I_{sl}/I_N	年节电量 Annual Capacity Saving (kWh)	重量 Weight (kg)
355-4	185	22.4	1486	93.3 (91.9)	0.85	1.8	0.7	6.5	24165	2350
	200	24.2	1486	93.4 (92.1)	0.85	1.8	0.7	6.5	24180	2360
	220	26.6	1487	93.5 (92.2)	0.85	1.8	0.7	6.5	26541	2410
	250	30.2	1485	93.6 (92.3)	0.85	1.8	0.7	6.5	30095	2430
	280	33.4	1485	93.7 (92.4)	0.86	1.8	0.7	6.5	33634	2500
	315	37.6	1486	93.8 (92.6)	0.86	1.8	0.7	6.5	34815	2570
400-4	355	42.3	1483	94.0 (92.8)	0.86	1.8	0.7	6.5	39068	2940
	400	47.5	1484	94.2 (93.0)	0.86	1.8	0.7	6.5	43833	3020
	450	53.3	1484	94.4 (93.2)	0.86	1.8	0.7	6.5	49102	3130
	500	59.2	1484	94.5 (93.4)	0.86	1.8	0.7	6.5	49851	3250
	560	66.2	1485	94.7 (93.6)	0.86	1.8	0.7	6.5	55596	3350
450-4	630	74.3	1487	94.9 (93.8)	0.86	1.8	0.7	6.5	62281	4190
	710	83.6	1488	95.0 (94.0)	0.86	1.8	0.7	6.5	63606	4310
	800	92.8	1489	95.3 (94.3)	0.87	1.8	0.7	6.5	71216	4470
	900	104.3	1488	95.4 (94.4)	0.87	1.8	0.7	6.5	79949	4600
500-4	1000	115.8	1488	95.5 (94.5)	0.87	1.8	0.7	6.5	88645	5160
	1120	129.7	1489	95.5 (94.6)	0.87	1.8	0.7	6.5	89260	5330
	1250	142.8	1489	95.7 (94.8)	0.88	1.8	0.7	6.5	99202	5550
	1400	159.8	1490	95.8 (94.9)	0.88	1.8	0.7	6.5	110874	5770
560-4	1600	182.4	1489	95.9 (95.0)	0.88	1.8	0.6	6.5	126448	7400
	1800	205.0	1489	96.0 (95.1)	0.88	1.8	0.6	6.5	141956	7700
	2000	227.6	1490	96.1 (95.3)	0.88	1.8	0.6	6.5	139763	8200
630-4	2240	254.6	1489	96.2 (95.4)	0.88	1.8	0.6	6.5	156208	9900
	2500	283.9	1489	96.3 (95.5)	0.88	1.8	0.6	6.5	173976	10300
	2800	317.9	1490	96.3 (95.6)	0.88	1.8	0.6	6.5	170319	10600
	3150	356.9	1491	96.5 (95.8)	0.88	1.8	0.6	6.5	190812	11000

注：1. 括号内效率值为国家标准值。

Note: 1. Efficiency values in brackets are national standard values.

2. 年节电量 (KWh) 为每年按8000h计算值。

2. Annual capacity of electricity saving is calculated according to 8000h/year.

► YXKK(IP44)、(IP54)系列6kV技术数据
 Technical data for YXKK(IP44) and (IP54) Series (6kV)

型号 Type	额定功率 Rated Power (KW)	定子电流 Stator Current (A)	转速 Speed (A)	效率 Efficiency (%)	功率因数 Power Factor (COSφ)	最大转矩 Maximum Torque 额定转矩 Rated Torque T_M/T_N	堵转转矩 Locked-rotor Torque 额定转矩 Rated Torque T_{st}/T_N	堵转电流 Locked-rotor Current 额定电流 Rated Current I_{st}/I_N	年节电量 Annual Capacity Saving (kWh)	重量 Weight (kg)
710-4	3550	406.9	1491	96.5 (95.8)	0.87	1.8	0.5	6.5	215042	13800
	4000	458.0	1491	96.6 (95.9)	0.87	1.8	0.5	6.5	241798	14400
	4500	515.2	1491	96.6 (95.9)	0.87	1.8	0.5	6.5	272022	15000
800-4	5000	571.9	1491	96.7 (96.0)	0.87	2.0	0.5	6.5	301620	19400
	5600	639.9	1491	96.8 (96.1)	0.87	2.0	0.5	6.5	337114	20200
	6300	719.1	1491	96.9 (96.2)	0.87	2.0	0.5	6.5	378468	21800
355-6	185	23.3	986	93.0 (91.5)	0.82	1.8	0.7	6.0	26088	2490
	200	25.2	987	93.1 (91.8)	0.82	1.8	0.7	6.0	24337	2550
	220	27.7	987	93.3 (92.0)	0.82	1.8	0.7	6.0	26655	2640
	250	31.4	987	93.5 (92.2)	0.82	1.8	0.7	6.0	30160	2740
400-6	280	35.0	989	93.8 (92.5)	0.82	1.8	0.7	6.0	33562	3060
	315	39.3	989	94.0 (92.8)	0.82	1.8	0.7	6.0	34666	3180
	355	43.7	988	94.2 (93.0)	0.83	1.8	0.7	6.0	38901	3280
	400	49.2	989	94.3 (93.1)	0.83	1.8	0.7	6.0	43739	3410
450-6	450	55.2	990	94.5 (93.4)	0.83	1.8	0.7	6.0	44866	4140
	500	61.1	990	94.8 (93.7)	0.83	1.8	0.7	6.0	49534	4300
	560	67.6	990	94.9 (93.8)	0.84	1.8	0.7	6.0	55361	4420
	630	76.0	991	95.0 (93.9)	0.84	1.8	0.7	6.0	62149	4530

注：1. 括号内效率值为国家标准值。

Note: 1. Efficiency values in brackets are national standard values.

2. 年节电量 (KWh) 为每年按 8000h 计算值。

2. Annual capacity of electricity saving is calculated according to 8000h/year.

YX、YXKS、YXKK 6kV 系列高效高压三相异步电动机

YX, YXKS, YXKK Series 6kV High-efficiency High-voltage Three-phase Asynchronous Motor

► YXKK(IP44)、(IP54)系列6kV技术数据

Technical data for YXKK(IP44) and (IP54) Series (6kV)

型号 Type	额定功率 Rated Power (KW)	定子电流 Stator Current (A)	转速 Speed (A)	效率 Efficiency (%)	功率因数 Power Factor (COSφ)	最大转矩 Maximum Torque	堵转转矩 Locked-rotor Torque	堵转电流 Locked-rotor Torque	年节电量 Annual Capacity Saving (kWh)	重量 Weight (kg)
						额定转矩 Rated Torque T_M/T_N	额定转矩 Rated Torque T_{st}/T_N	额定电流 Rated Current I_{st}/I_N		YX
500-6	710	85.4	991	95.2 (94.2)	0.84	1.8	0.7	6.0	69598	4980
	800	96.1	991	95.4 (94.4)	0.84	1.8	0.7	6.0	71066	5180
	900	106.7	991	95.5 (94.5)	0.85	1.8	0.7	6.0	79781	5390
	1000	118.5	992	95.5 (94.6)	0.85	1.8	0.7	6.0	79696	5620
560-6	1120	132.6	992	95.6 (94.7)	0.85	1.8	0.7	6.5	89072	7200
	1250	146.0	992	95.8 (94.9)	0.86	1.8	0.7	6.5	98994	7450
	1400	163.3	992	95.9 (95.0)	0.86	1.8	0.7	6.5	110642	7700
630-6	1600	186.5	992	96.0 (95.1)	0.86	1.8	0.7	6.5	126183	9400
	1800	209.8	992	96.0 (95.2)	0.86	1.8	0.7	6.5	126050	9700
	2000	232.6	993	96.2 (95.4)	0.86	1.8	0.7	6.5	139472	10300
	2240	260.5	993	96.2 (95.5)	0.86	1.8	0.7	6.5	136539	10700
710-6	2500	290.5	994	96.3 (95.6)	0.86	2.0	0.6	6.5	152070	13100
	2800	325.0	994	96.4 (95.6)	0.86	2.0	0.6	6.5	194448	13700
	3150	365.2	994	96.5 (95.8)	0.86	2.0	0.6	6.5	190812	14500
	3550	411.6	994	96.5 (95.8)	0.86	2.0	0.6	6.5	215042	15150
800-6	4000	458	994	96.6 (95.9)	0.87	2.0	0.6	6.5	241798	19000
	4500	515.2	994	96.6 (95.9)	0.87	2.0	0.6	6.5	272022	20200
	5000	571.9	994	96.7 (96.0)	0.87	2.0	0.6	6.5	301620	21300
900-6	5600	647.3	995	96.8 (96.1)	0.86	2.0	0.6	6.5	337114	23600
	6300	727.5	995	96.9 (96.2)	0.86	2.0	0.6	6.5	378468	24500

注：1. 括号内效率值为国家标准值。

Note: 1. Efficiency values in brackets are national standard values.

2. 年节电量 (KWh) 为每年按8000h计算值。

2. Annual capacity of electricity saving is calculated according to 8000h/year.

► YXKK(IP44)、(IP54)系列6kV技术数据
 Technical data for YXKK(IP44) and (IP54) Series (6kV)

型号 Type	额定功率 Rated Power (KW)	定子电流 Stator Current (A)	转速 Speed (A)	效率 Efficiency (%)	功率因数 Power Factor (COSφ)	最大转矩 Maximum Torque 额定转矩 Rated Torque T_M/T_N	堵转转矩 Locked-rotor Torque 额定转矩 Rated Torque T_{sl}/T_N	堵转电流 Locked-rotor Current 额定电流 Rated Current I_{sl}/I_N	年节电量 Annual Capacity Saving (kWh)	重量 Weight (kg)
400-8	185	24.5	741	93.0 (91.6)	0.78	1.8	0.8	5.5	24323	2840
	200	26.5	741	93.2 (91.9)	0.78	1.8	0.8	5.5	24285	2900
	220	29.1	741	93.4 (92.1)	0.78	1.8	0.8	5.5	26598	3010
	250	32.6	740	93.5 (92.2)	0.79	1.8	0.8	5.5	30160	3130
	280	36.4	740	93.7 (92.4)	0.79	1.8	0.8	5.5	33634	3260
450-8	315	40.9	743	93.9 (92.7)	0.79	1.8	0.8	5.5	34741	4210
	355	46.0	743	94.0 (92.8)	0.79	1.8	0.8	5.5	39068	4330
	400	51.1	743	94.2 (93.0)	0.80	1.8	0.8	5.5	43833	4440
	450	57.4	742	94.3 (93.1)	0.80	1.8	0.8	5.5	49206	4600
500-8	500	63.5	743	94.7 (93.6)	0.80	1.8	0.8	5.5	49639	5160
	560	71.0	743	94.9 (93.8)	0.80	1.8	0.8	5.5	55361	5300
	630	77.8	743	95.0 (93.9)	0.82	1.8	0.8	5.5	62149	5490
	710	87.7	743	95.0 (94.0)	0.82	1.8	0.8	5.5	63606	5700
560-8	800	98.6	743	95.2 (94.2)	0.82	1.8	0.7	6.0	71366	7100
	900	108.2	744	95.3 (94.3)	0.84	1.8	0.7	6.0	80118	7350
	1000	120.1	745	95.4 (94.4)	0.84	1.8	0.7	6.0	88832	7600
630-8	1120	134.3	744	95.5 (94.5)	0.84	1.8	0.7	6.0	99283	8950
	1250	149.8	744	95.6 (94.7)	0.84	1.8	0.7	6.0	99411	9250
	1400	167.6	744	95.7 (94.8)	0.84	1.8	0.7	6.0	111107	9550
	1600	191.3	744	95.8 (94.9)	0.84	1.8	0.7	6.0	126713	9800
	1800	215.2	744	95.8 (95.0)	0.84	1.8	0.7	6.0	126579	10100
710-8	2000	236.1	745	95.9 (95.1)	0.85	2.0	0.7	6.5	140349	12800
	2240	263.9	745	96.1 (95.3)	0.85	2.0	0.7	6.5	156535	13400
	2500	294.2	745	96.2 (95.4)	0.85	2.0	0.7	6.5	174340	14000

注：1. 括号内效率值为国家标准值。

Note: 1. Efficiency values in brackets are national standard values.

2. 年节电量 (KWh) 为每年按 8000h 计算值。

2. Annual capacity of electricity saving is calculated according to 8000h/year.

YX、YXKS、YXKK 6kV 系列高效高压三相异步电动机

YX, YXKS, YXKK Series 6kV High-efficiency High-voltage Three-phase Asynchronous Motor

► YXKK(IP44)、(IP54)系列6kV技术数据

Technical data for YXKK(IP44) and (IP54) Series (6kV)

型号 Type	额定功率 Rated Power (KW)	定子电流 Stator Current (A)	转速 Speed (A)	效率 Efficiency (%)	功率因数 Power Factor ($\cos\varphi$)	最大转矩 Maximum Torque	堵转转矩 Locked-rotor Torque	堵转电流 Locked-rotor Current	年节电量 Annual Capacity Saving (kWh)	重量 Weight (kg)
						额定转矩 Rated Torque T_M/T_N	额定转矩 Rated Torque T_{st}/T_N	额定电流 Rated Current I_{st}/I_N		YX
800-8	2800	325.3	744	96.1 (95.5)	0.86	2.0	0.7	6.5	194854	17900
	3150	365.6	744	96.4 (95.6)	0.86	2.0	0.7	6.5	218754	18700
	3550	411.6	745	96.5 (95.7)	0.86	2.0	0.7	6.5	246019	19550
900-8	4000	458	745	96.6 (95.8)	0.87	2.0	0.7	6.5	276629	22500
	4500	514.7	745	96.7 (95.9)	0.87	2.0	0.7	6.5	310561	23500
	5000	571.9	745	96.7 (96.0)	0.87	2.0	0.7	6.5	301620	24600
1000-8	5600	639.9	745	96.8 (96.1)	0.87	2.0	0.6	6.5	337114	29500
	6300	719.1	745	96.9 (96.2)	0.87	2.0	0.6	6.5	378468	31000
	7100	809.6	746	97.0 (96.3)	0.87	2.0	0.6	6.5	425646	32000
	8000	911.3	745	97.1 (96.3)	0.87	2.0	0.6	6.5	547551	33200
400-10	185	25.7	592	92.4 (90.8)	0.75	1.8	0.8	5.5	28224	2980
	200	27.7	592	92.6 (91.1)	0.75	1.8	0.8	5.5	28450	3040
450-10	220	30.4	593	92.7 (91.3)	0.75	1.8	0.8	5.5	29113	3950
	250	34.5	593	92.9 (91.5)	0.75	1.8	0.8	5.5	32940	4050
	280	38.6	593	93.1 (91.7)	0.75	1.8	0.8	5.5	36733	4150
	315	42.7	533	93.4 (92.1)	0.76	1.8	0.8	5.5	38084	4250
	355	48.0	593	93.6 (92.3)	0.76	1.8	0.8	5.5	42735	4400
500-10	400	54.0	593	93.8 (92.6)	0.76	1.8	0.8	5.5	44210	4800
	450	60.7	593	93.9 (92.7)	0.76	1.8	0.8	5.5	49629	4890
	500	65.5	593	94.2 (93.0)	0.78	1.8	0.8	5.5	54791	5060
	560	73.3	593	94.3 (93.1)	0.78	1.8	0.8	5.5	61235	5240
	630	82.3	593	94.4 (93.2)	0.78	1.8	0.8	5.5	68742	5440
560-10	710	92.7	595	94.5 (93.4)	0.78	1.8	0.7	6.0	70788	7050
	800	101.5	595	94.8 (93.7)	0.80	1.8	0.7	6.0	79255	7250
	900	114.1	594	94.9 (93.8)	0.80	1.8	0.7	6.0	88973	7450

注：1. 括号内效率值为国家标准值。

Note: 1. Efficiency values in brackets are national standard values.

2. 年节电量 (KWh) 为每年按8000h计算值。

2. Annual capacity of electricity saving is calculated according to 8000h/year.

► YXKK(IP44)、(IP54)系列6kV技术数据
 Technical data for YXKK(IP44) and (IP54) Series (6kV)

型号 Type	额定功率 Rated Power (KW)	定子电流 Stator Current (A)	转速 Speed (A)	效率 Efficiency (%)	功率因数 Power Factor (COSφ)	最大转矩 Maximum Torque 额定转矩 Rated Torque T_M/T_N	堵转转矩 Locked-rotor Torque 额定转矩 Rated Torque T_{st}/T_N	堵转电流 Locked-rotor Current 额定电流 Rated Current I_{st}/I_N	年节电量 Annual Capacity Saving (kWh)	重量 Weight (kg)
630-10	1000	126.6	593	95.0 (93.9)	0.80	1.8	0.7	6.0	98649	9100
	1120	141.7	593	95.1 (94.1)	0.80	1.8	0.7	6.0	100124	9350
	1250	157.6	593	95.4 (94.4)	0.80	1.8	0.7	6.0	111040	9600
	1400	176.3	593	95.5 (94.5)	0.80	1.8	0.7	6.0	124103	9900
	1600	201.5	593	95.5 (94.6)	0.80	1.8	0.7	6.0	127514	10200
710-10	1800	215.7	594	95.6 (94.7)	0.84	2.0	0.7	6.0	143152	12600
	2000	239.4	594	95.7 (94.8)	0.84	2.0	0.7	6.0	158724	13300
800-10	2240	264.4	596	95.9 (95.0)	0.85	2.0	0.7	6.0	177027	17900
	2500	294.8	596	96.0 (95.1)	0.85	2.0	0.7	6.0	197161	18500
	2800	329.8	596	96.1 (95.2)	0.85	2.0	0.7	6.0	220359	19200
900-10	3150	371.1	596	96.1 (95.3)	0.85	2.0	0.7	6.0	220127	22100
	3550	417.3	596	96.3 (95.5)	0.85	2.0	0.7	6.0	247046	23300
	4000	469.7	596	96.4 (95.6)	0.85	2.0	0.7	6.0	277783	24300
	4500	528.5	596	96.4 (95.7)	0.85	2.0	0.7	6.0	273157	25300
1000-10	5000	586.6	596	96.5 (95.7)	0.85	2.0	0.7	6.0	346506	30800
	5600	656.3	596	96.6 (95.8)	0.85	2.0	0.7	6.0	387280	31900
	6300	737.5	596	96.7 (95.9)	0.85	2.0	0.7	6.0	434786	33000
450-12	185	27.5	495	92.5 (90.9)	0.70	1.8	0.8	5.5	28163	4100
	200	29.7	495	92.6 (91.2)	0.70	1.8	0.8	5.5	26524	4190
	220	31.7	494	92.8 (91.4)	0.72	1.8	0.8	5.5	29050	4300
	250	35.9	494	93.1 (91.7)	0.72	1.8	0.8	5.5	32797	4480
500-12	280	40.1	495	93.3 (91.9)	0.72	1.8	0.8	5.5	36575	4900
	315	45.1	495	93.4 (92.1)	0.72	1.8	0.8	5.5	38084	5060
	355	49.3	495	93.6 (92.3)	0.74	1.8	0.8	5.5	42735	5240
	400	55.5	495	93.8 (92.6)	0.74	1.8	0.8	5.5	44210	5380
	450	62.3	495	93.9 (92.7)	0.74	1.8	0.8	5.5	49629	5580

注：1. 括号内效率值为国家标准值。

Note: 1. Efficiency values in brackets are national standard values.

2. 年节电量 (KWh) 为每年按 8000h 计算值。

2. Annual capacity of electricity saving is calculated according to 8000h/year.

YX、YXKS、YXKK 6kV 系列高效高压三相异步电动机

YX, YXKS, YXKK Series 6kV High-efficiency High-voltage Three-phase Asynchronous Motor

► YXKK(IP44)、(IP54)系列6kV技术数据

Technical data for YXKK(IP44) and (IP54) Series (6kV)

型号 Type	额定功率 Rated Power (KW)	定子电流 Stator Current (A)	转速 Speed (A)	效率 Efficiency (%)	功率因数 Power Factor ($\cos\varphi$)	最大转矩 Maximum Torque	堵转转矩 Locked-rotor Torque	堵转电流 Locked-rotor Current	年节电量 Annual Capacity Saving (kWh)	重量 Weight (kg)
						额定转矩 Rated Torque T_M/T_N	额定转矩 Rated Torque T_{st}/T_N	额定电流 Rated Current I_{st}/I_N		YX
560-12	500	69.0	495	94.2 (93.1)	0.74	1.8	0.7	6.0	50171	6950
	560	75.2	495	94.3 (93.2)	0.76	1.8	0.7	6.0	56072	7150
	630	84.5	495	94.4 (93.3)	0.76	1.8	0.7	6.0	62946	7250
630-12	710	95.2	495	94.5 (93.4)	0.76	1.8	0.7	6.0	70788	8800
	800	106.8	495	94.8 (93.7)	0.76	1.8	0.7	6.0	79255	9150
	900	120.1	495	94.9 (93.8)	0.76	1.8	0.7	6.0	88973	9350
	1000	133.3	495	95.0 (93.9)	0.76	1.8	0.7	6.0	98649	9600
	1120	149.3	494	95.0 (94.0)	0.76	1.8	0.7	6.0	100336	9900
710-12	1250	162.0	495	95.2 (94.2)	0.78	2.0	0.7	6.0	111510	12550
	1400	178.9	495	95.3 (94.3)	0.79	2.0	0.7	6.0	124627	12900
	1600	204.5	495	95.3 (94.4)	0.79	2.0	0.7	6.0	128052	13300
800-12	1800	224.1	495	95.4 (94.5)	0.81	2.0	0.7	6.0	143756	18000
	2000	248.8	495	95.5 (94.6)	0.81	2.0	0.7	6.0	159393	18600
	2240	278.1	496	95.7 (94.8)	0.81	2.0	0.7	6.0	177771	19200
900-12	2500	310	496	95.8 (94.9)	0.81	2.0	0.7	6.0	197989	23700
	2800	346.9	496	95.9 (95.0)	0.81	2.0	0.7	6.0	221283	24600
	3150	389.8	496	96.0 (95.1)	0.81	2.0	0.7	6.0	248423	25500
1000-12	3550	433	497	96.2 (95.3)	0.82	2.0	0.7	6.0	278800	28500
	4000	487.9	497	96.2 (95.4)	0.82	2.0	0.7	6.0	278944	29500
	4500	548.9	497	96.2 (95.5)	0.82	2.0	0.7	6.0	274298	30500

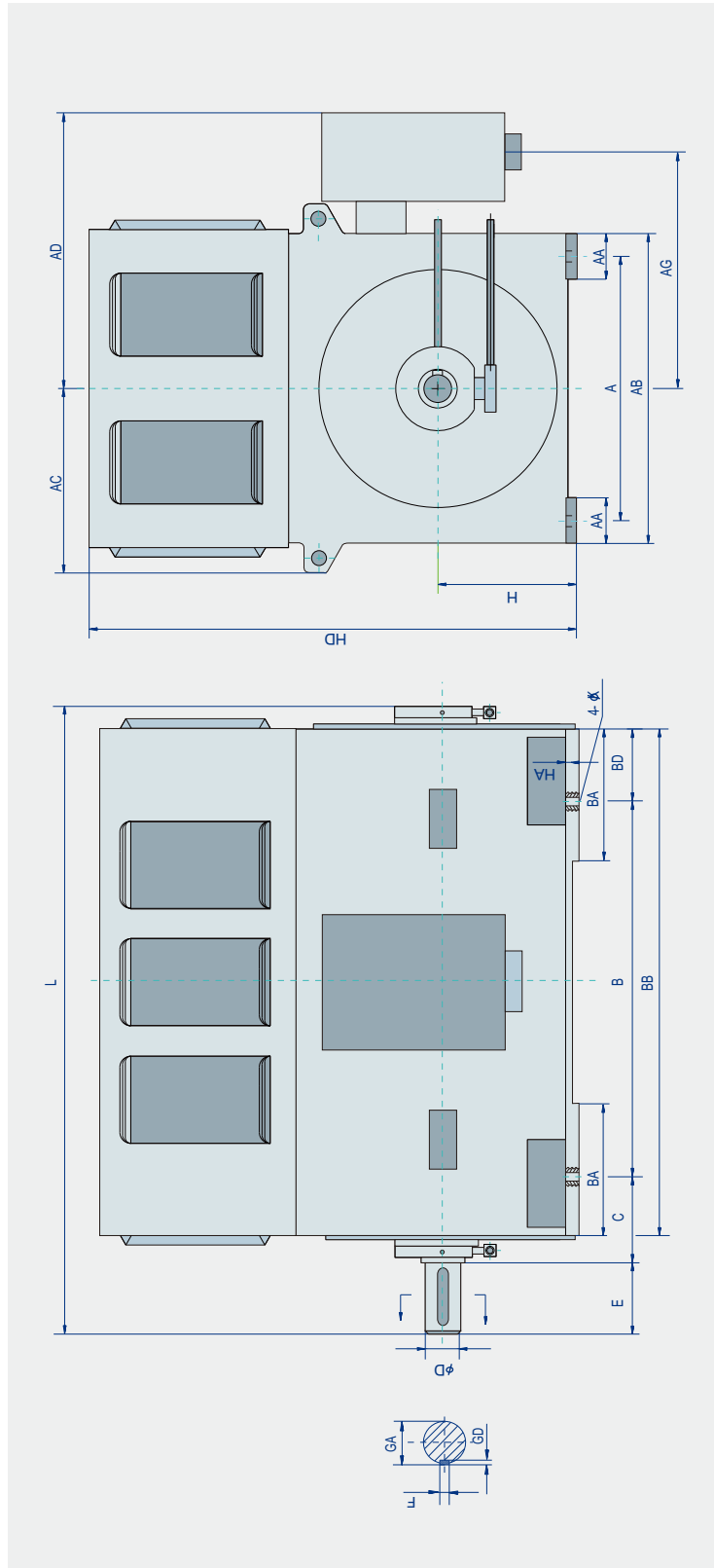
注：1. 括号内效率值为国家标准值。

Note: 1. Efficiency values in brackets are national standard values.

2. 年节电量 (KWh) 为每年按8000h计算值。

2. Annual capacity of electricity saving is calculated according to 8000h/year.

► YX(IP23)系列中型电动机外形及安装尺寸图
 Outline Drawings and Mounting Dimensions for YX (IP23) Series Medium-sized Motor



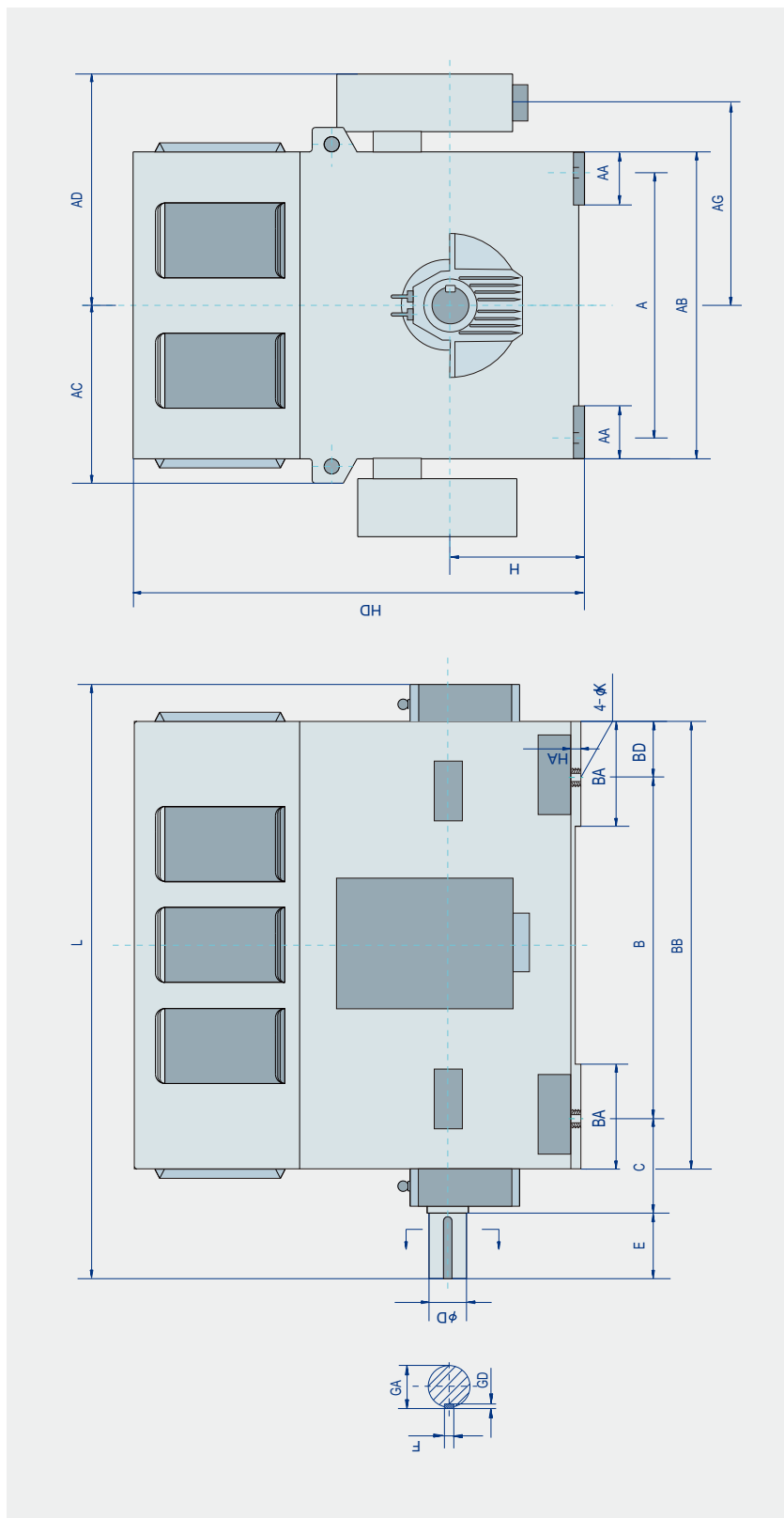
机座号 Frame No.	极数 No. of pole	安装尺寸及公差										外形尺寸										
		A	B	C	D	E	F	GA	GD	H	K	AA	AB	AC	AD	AG	BA	BB	BD	HA	HD	L
355	2	630 ± 1.4	900 ± 1.4	315 ± 4.0	80 ^{+0.030} _{+0.031}	170 ± 0.50	22	85	14	355 ^{±0.10}	28	155	800	500	850	620	510	1430	315	30	1120	1785
	4、6	630 ± 1.4	900 ± 1.4	315 ± 4.0	100 ^{+0.033} _{+0.033}	210 ± 0.57	28	106	16	355 ^{±0.10}	28	220	800	500	860	630	400	1390	290	30	1150	1835
400	2	710 ± 1.75	1000 ± 1.75	375 ± 4.0	90 ^{+0.035} _{+0.035}	170 ± 0.50	25	95	14	400 ^{±0.10}	35	165	900	550	900	670	515	1580	310	38	1255	1945
	4、6、8	710 ± 1.75	1000 ± 1.75	335 ± 4.0	110 ^{+0.033} _{+0.033}	210 ± 0.57	28	116	16	400 ^{±0.10}	35	255	900	550	910	680	400	1520	305	30	1280	1980
450	2	800 ± 1.75	1120 ± 1.75	400 ± 4.0	100 ^{+0.033} _{+0.033}	210 ± 0.57	28	106	16	450 ^{±0.10}	35	170	1000	600	950	720	565	1720	305	42	1405	2130
	4	800 ± 1.75	1120 ± 1.75	355 ± 4.0	120 ^{+0.033} _{+0.033}	210 ± 0.57	32	127	18	450 ^{±0.10}	35	290	1000	600	960	730	450	1750	380	30	1415	2180
500	6、8、10、12	800 ± 1.75	1120 ± 1.75	355 ± 4.0	130 ^{+0.040} _{+0.035}	250 ± 0.57	32	137	18	450 ^{±0.10}	35	290	1000	600	960	730	450	1750	380	30	1415	2220
	2	900 ± 2.1	1250 ± 2.1	560 ± 4.0	110 ^{+0.035} _{+0.033}	210 ± 0.57	28	116	16	500 ^{±0.10}	42	175	1120	660	1100	900	600	1880	300	42	1560	2410
560	4	900 ± 2.1	1250 ± 2.1	475 ± 4.0	130 ^{+0.040} _{+0.035}	250 ± 0.57	32	137	18	500 ^{±0.10}	42	335	1120	660	1020	790	500	1860	270	30	1575	2380
	6、8、10、12	900 ± 2.1	1250 ± 2.1	475 ± 4.0	140 ^{+0.040} _{+0.035}	250 ± 0.57	36	148	20	500 ^{±0.10}	42	335	1120	660	1020	790	500	1860	270	30	1575	2380
630	4	1000 ± 2.1	1400 ± 2.1	500 ± 4.0	150 ^{+0.040} _{+0.035}	250 ± 0.57	36	158	20	560 ^{±0.10}	42	200	1260	760	1200	930	600	2100	350	45	1850	2750
	6、8、10、12	1000 ± 2.1	1400 ± 2.1	500 ± 4.0	160 ^{+0.040} _{+0.035}	300 ± 0.65	40	169	22	560 ^{±0.10}	42	200	1260	760	1200	930	600	2100	305	45	1850	2750
630	4	1120 ± 2.1	1600 ± 2.1	530 ± 4.0	170 ^{+0.045} _{+0.035}	300 ± 0.65	40	179	22	630 ^{±0.10}	48	250	1400	830	1260	1000	600	2200	300	45	2200	2950
	6、8、10、12	1120 ± 2.1	1600 ± 2.1	530 ± 4.0	180 ^{+0.045} _{+0.035}	300 ± 0.65	45	190	25	630 ^{±0.10}	48	250	1400	830	1260	1000	600	2200	300	45	2200	2950

YX、YXKS、YXKK 6kV 系列高效高压三相异步电动机

YX, YXKS, YXKK Series 6kV High-efficiency High-voltage Three-phase Asynchronous Motor

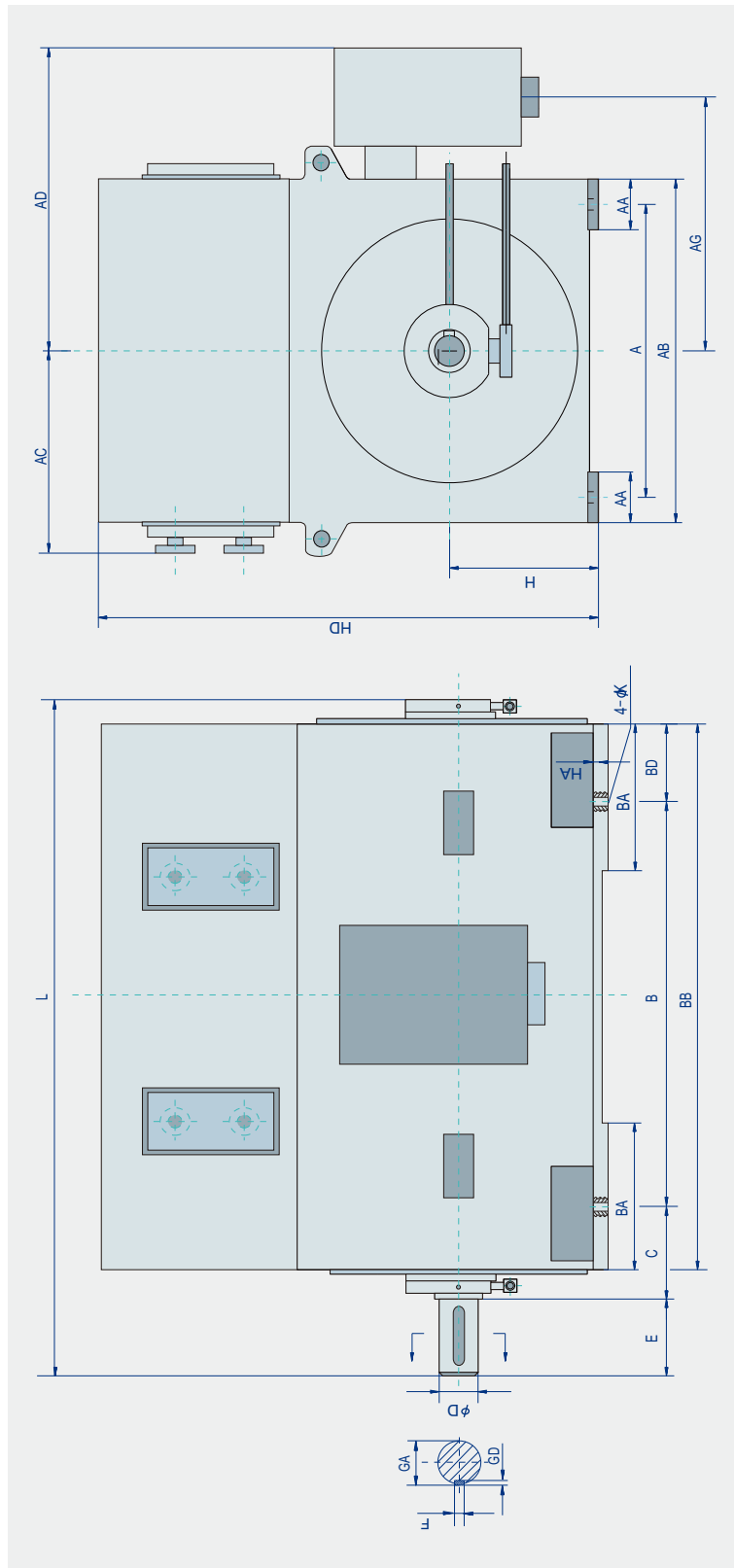
► YX(IP23)系列中型电动机外形及安装尺寸图

Outline Drawings and Mounting Dimensions for YX (IP23) Series Medium-sized Motor



机座号 Frame No.	极数 No. of pole	安装尺寸及公差										外形尺寸										
		Mounting dimensions					Overall dimension					Mounting dimensions					Overall dimension					
A	B	C	D	E	F	GA	GD	H	K	AA	AB	AC	AD	AG	BA	BB	BD	HA	HD	L		
560	2	1000 ± 2.1	1400 ± 2.1	560 ± 4.0	130 ^{+0.040} _{-0.035}	250 ± 0.57	32	137	18	560 ⁰ _{-1.0}	42	205	1260	760	1170	920	600	1990	295	47	1850	2740
630	2	1120 ± 2.1	1600 ± 2.1	560 ± 4.0	140 ^{+0.040} _{-0.035}	250 ± 0.57	36	148	20	630 ⁰ _{-1.0}	48	235	1400	840	1240	990	700	2100	250	52	2040	2920
710	2	1400 ± 2.8	1800 ± 2.8	600 ± 4.2	170 ^{+0.040} _{-0.035}	300 ± 0.65	40	179	22	710 ⁰ _{-1.0}	56	280	1600	930	1340	1090	650	2300	250	72	2500	3300

► YXKS(IP54)系列中型电动机外形及安装尺寸图
 Outline Drawings and Mounting Dimensions for YXKS(IP54) Series Medium-sized Motor



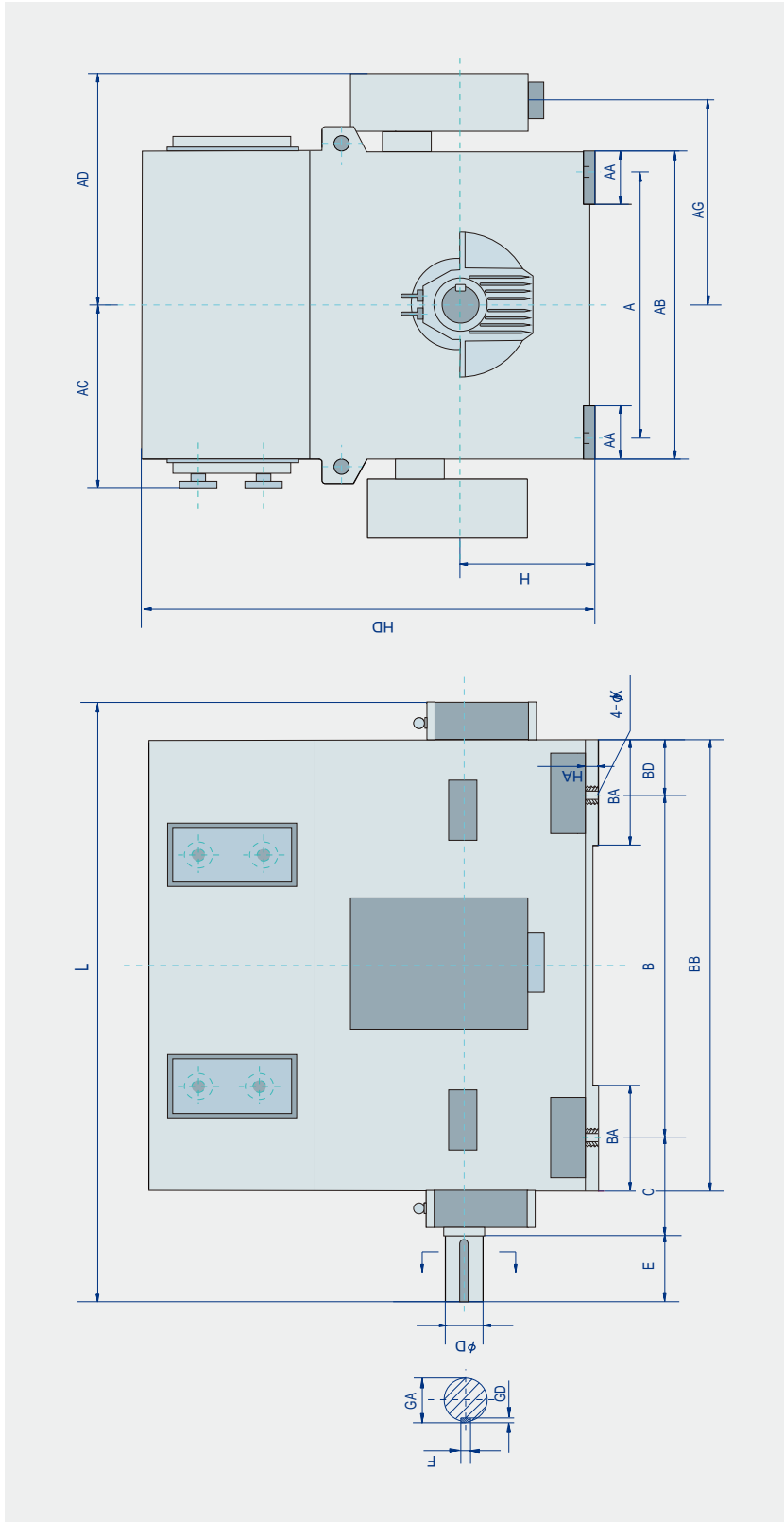
机座号 Frame No.	极数 No. of pole	安装尺寸及公差 Mounting dimensions										外形尺寸 Overall dimension										
		A	B	C	D	E	F	GA	GD	H	K	AA	AB	AC	AD	AG	BA	BB	BD	HA	HD	L
355	2	630 ± 1.4	900 ± 1.4	315 ± 4.0	80 ^{+0.080} _{+0.071}	170 ± 0.50	22	85	14	355 ^{±0.10}	28	155	800	575	850	620	510	1430	315	30	1250	1785
	4, 6	630 ± 1.4	900 ± 1.4	315 ± 4.0	100 ^{+0.085} _{+0.083}	210 ± 0.57	28	106	16	355 ^{±0.10}	28	220	800	575	860	630	400	1390	290	30	1260	1835
400	2	710 ± 1.75	1000 ± 1.75	375 ± 4.0	90 ^{+0.085} _{+0.083}	170 ± 0.50	25	95	14	400 ^{±0.10}	35	165	900	630	900	670	515	1580	310	38	1470	1935
	4, 6, 8	710 ± 1.75	1000 ± 1.75	335 ± 4.0	110 ^{+0.085} _{+0.083}	210 ± 0.57	28	116	16	400 ^{±0.10}	35	255	900	630	910	680	400	1520	305	30	1475	1980
450	2	800 ± 1.75	1120 ± 1.75	400 ± 4.0	100 ^{+0.085} _{+0.083}	210 ± 0.57	28	106	16	450 ^{±0.10}	35	170	1000	700	950	720	565	1720	305	42	1610	2130
	4	800 ± 1.75	1120 ± 1.75	355 ± 4.0	120 ^{+0.085} _{+0.083}	210 ± 0.57	32	127	18	450 ^{±0.10}	35	290	1000	700	960	730	450	1750	380	30	1600	2180
500	6, 8, 10, 12	800 ± 1.75	1120 ± 1.75	355 ± 4.0	130 ^{+0.090} _{+0.085}	250 ± 0.57	32	137	18	450 ^{±0.10}	35	290	1000	700	960	730	450	1750	380	30	1600	2220
	2	900 ± 2.1	1250 ± 2.1	560 ± 4.0	110 ^{+0.085} _{+0.083}	210 ± 0.57	28	116	16	500 ^{±0.10}	42	175	1120	760	1100	900	600	1880	300	42	1760	2410
560	4	900 ± 2.1	1250 ± 2.1	475 ± 4.0	130 ^{+0.090} _{+0.085}	250 ± 0.57	32	137	18	500 ^{±0.10}	42	335	1120	760	1020	790	500	1860	270	30	1750	2380
	6, 8, 10, 12	900 ± 2.1	1250 ± 2.1	475 ± 4.0	140 ^{+0.090} _{+0.085}	250 ± 0.57	36	148	20	500 ^{±0.10}	42	335	1120	760	1020	790	500	1860	270	30	1750	2380
630	4	1000 ± 2.1	1400 ± 2.1	500 ± 4.0	150 ^{+0.090} _{+0.085}	250 ± 0.57	36	158	20	560 ^{±0.10}	42	200	1260	830	1200	930	600	2100	350	45	1950	2750
	6, 8, 10, 12	1000 ± 2.1	1400 ± 2.1	500 ± 4.0	160 ^{+0.090} _{+0.085}	300 ± 0.65	40	169	22	560 ^{±0.10}	42	200	1260	830	1200	930	600	2010	305	45	1950	2750
630	4	1120 ± 2.1	1600 ± 2.1	530 ± 4.0	170 ^{+0.090} _{+0.085}	300 ± 0.65	40	179	22	630 ^{±0.10}	48	250	1400	900	1260	1000	600	2200	300	45	2200	2950
	6, 8, 10, 12	1120 ± 2.1	1600 ± 2.1	530 ± 4.0	180 ^{+0.090} _{+0.085}	300 ± 0.65	45	190	25	630 ^{±0.10}	48	250	1400	900	1260	1000	600	2200	300	45	2200	2950

YX、YXKS、YXKK 6kV 系列高效高压三相异步电动机

YX, YXKS, YXKK Series 6kV High-efficiency High-voltage Three-phase Asynchronous Motor

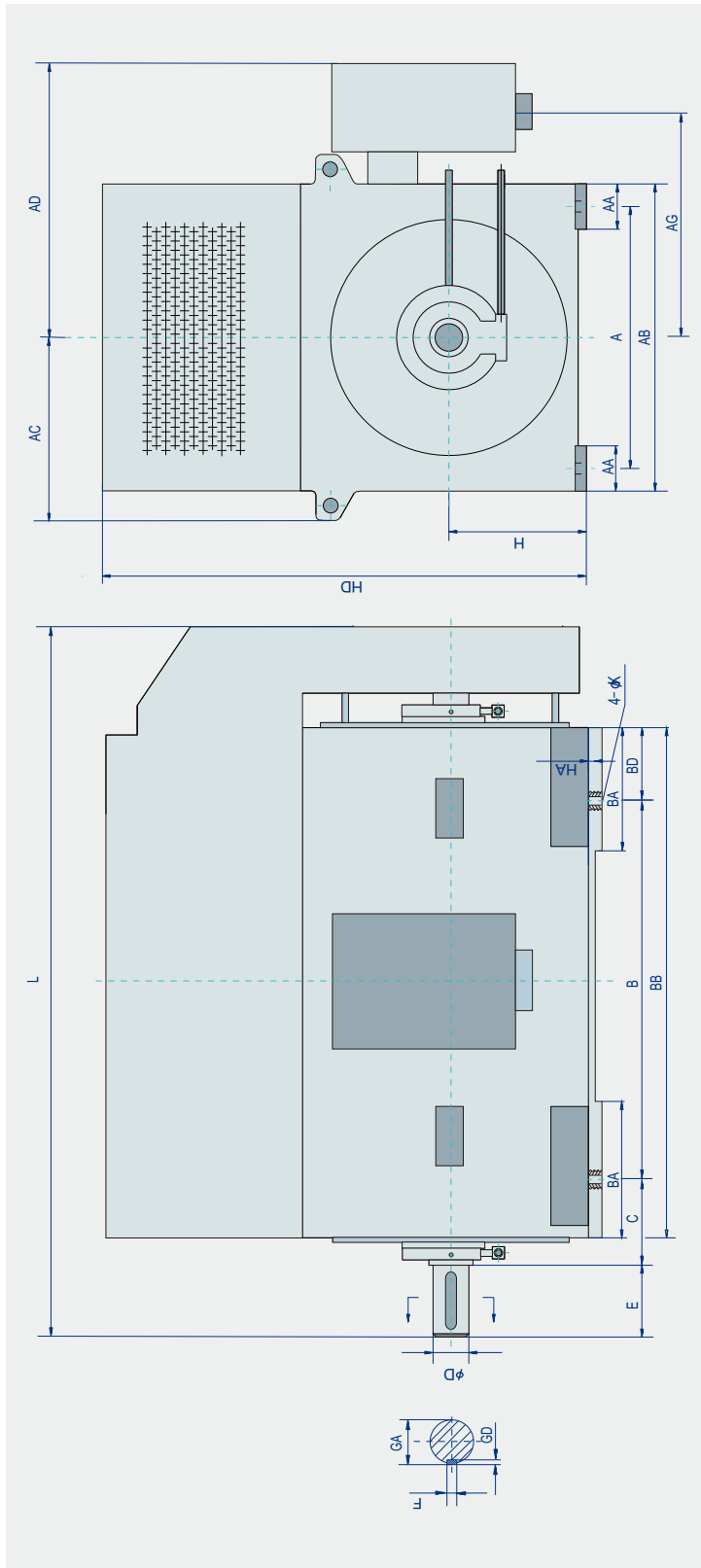
► YXKS(IP54)系列中型电动机外形及安装尺寸图

Outline Drawings and Mounting Dimensions for YXKS(IP54) Series Medium-sized Motor



机座号 Frame No.	极数 No. of pole	安装尺寸及公差										外形尺寸										
		A	B	C	D	E	F	GA	GD	H	K	AA	AB	AC	AD	AG	BA	BB	BD	HA	HD	L
560	2	1000 ± 2.1	1400 ± 2.1	560 ± 4.0	130 ^{+0.040} _{-0.035}	250 ± 0.57	32	137	18	560 ⁰ _{-0.10}	42	205	1260	760	1170	920	600	1990	295	47	2010	2740
630	2	1120 ± 2.1	1600 ± 2.1	560 ± 4.0	140 ^{+0.040} _{-0.035}	250 ± 0.57	36	148	20	630 ⁰ _{-0.10}	48	235	1400	840	1240	990	700	2100	250	52	2170	2920
710	2	1400 ± 2.8	1800 ± 2.8	600 ± 4.2	170 ^{+0.040} _{-0.035}	300 ± 0.65	40	179	22	710 ⁰ _{-0.10}	56	280	1600	930	1340	1090	650	2300	250	72	2500	3350

► YXKK(IP54)系列中型电动机外形及安装尺寸图
 Outline Drawings and Mounting Dimensions for YXKK(IP54) Series Medium-sized Motor



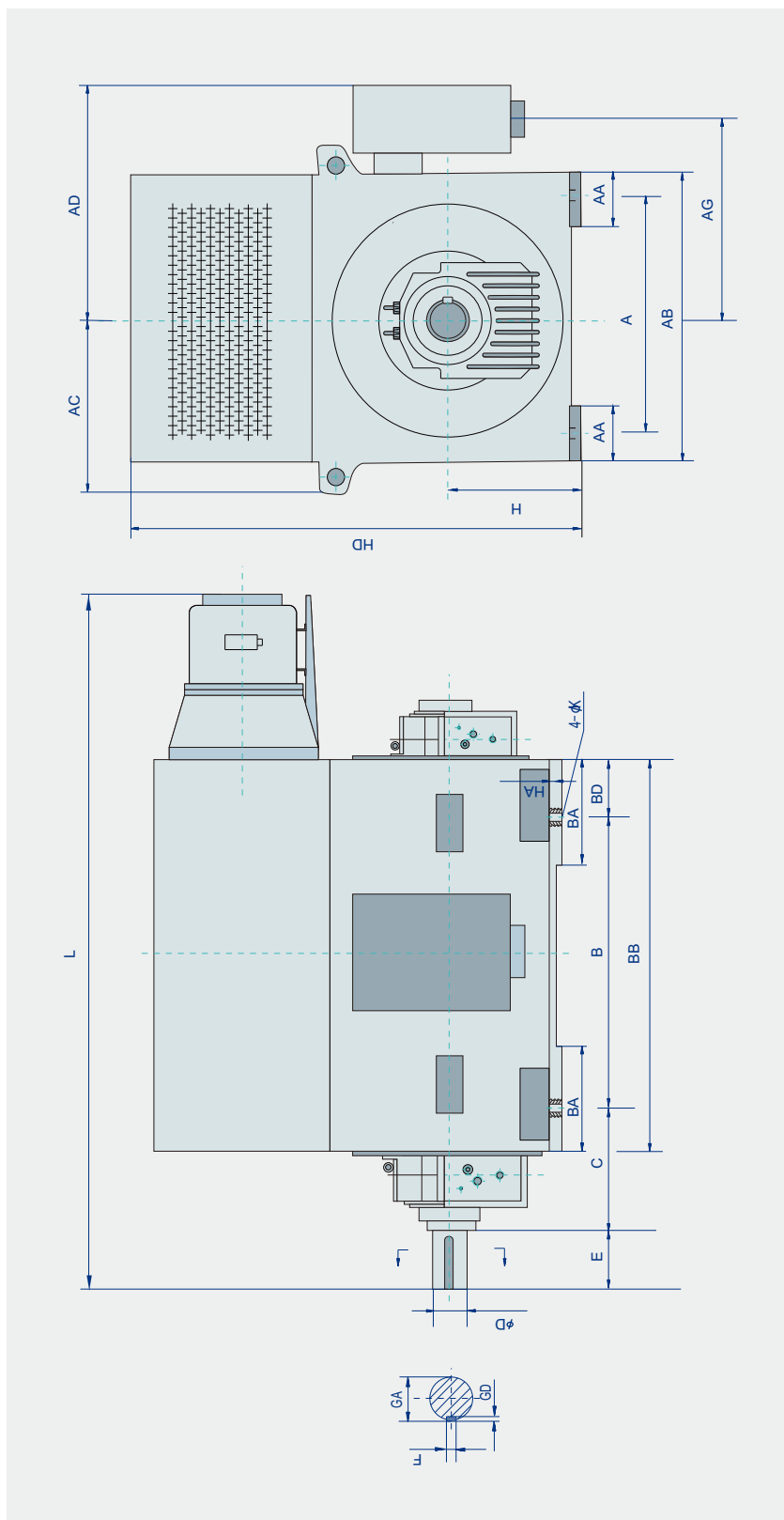
机座号 Frame No.	极数 No. of pole	安装尺寸及公差										外形尺寸										
		Mounting dimensions					Overall dimension					Overall dimension					Overall dimension					
		A	B	C	D	E	F	GA	GD	H	K	AA	AB	AC	AD	AG	BA	BB	BD	HA	HD	L
355	2	630 ± 1.4	900 ± 1.4	315 ± 4.0	80 ^{+0.030} _{-0.01}	170 ± 0.50	22	85	14	355 ⁰ ₋₁₀	28	155	800	500	850	620	510	1430	315	30	1500	2450
	4, 6	630 ± 1.4	900 ± 1.4	315 ± 4.0	100 ^{+0.035} _{-0.005}	210 ± 0.57	28	106	16	355 ⁰ ₋₁₀	28	220	800	500	860	630	400	1390	290	30	1500	2450
400	2	710 ± 1.75	1000 ± 1.75	375 ± 4.0	90 ^{+0.035} _{-0.005}	170 ± 0.50	25	95	14	400 ⁰ ₋₁₀	35	165	900	550	900	670	515	1580	310	38	1700	2600
	4, 6, 8	710 ± 1.75	1000 ± 1.75	335 ± 4.0	110 ^{+0.035} _{-0.013}	210 ± 0.57	28	116	16	400 ⁰ ₋₁₀	35	255	900	550	910	680	400	1520	305	30	1700	2600
450	2	800 ± 1.75	1120 ± 1.75	400 ± 4.0	100 ^{+0.035} _{-0.013}	210 ± 0.57	28	106	16	450 ⁰ ₋₁₀	35	170	1000	600	950	720	565	1720	305	42	1900	2900
	4	800 ± 1.75	1120 ± 1.75	355 ± 4.0	120 ^{+0.035} _{-0.013}	210 ± 0.57	32	127	18	450 ⁰ ₋₁₀	35	290	1000	600	960	730	450	1750	380	30	1900	2900
500	6, 8, 10, 12	800 ± 1.75	1120 ± 1.75	355 ± 4.0	130 ^{+0.040} _{-0.015}	250 ± 0.57	32	137	18	450 ⁰ ₋₁₀	35	290	1000	600	960	730	450	1750	380	30	1900	2900
	2	900 ± 2.1	1250 ± 2.1	560 ± 4.0	110 ^{+0.035} _{-0.013}	210 ± 0.57	28	116	16	500 ⁰ ₋₁₀	42	175	1120	660	1010	780	600	1880	300	42	2200	3300
500	4	900 ± 2.1	1250 ± 2.1	475 ± 4.0	130 ^{+0.040} _{-0.015}	250 ± 0.57	32	137	18	500 ⁰ ₋₁₀	42	335	1120	660	1020	790	500	1860	270	30	2200	3300
	6, 8, 10, 12	900 ± 2.1	1250 ± 2.1	475 ± 4.0	140 ^{+0.040} _{-0.015}	250 ± 0.57	36	148	20	500 ⁰ ₋₁₀	42	335	1120	660	1020	790	500	1860	270	30	2200	3300
560	4	1000 ± 2.1	1400 ± 2.1	500 ± 4.0	150 ^{+0.040} _{-0.015}	250 ± 0.57	36	158	20	560 ⁰ ₋₁₀	42	200	1260	760	1200	930	600	2100	350	45	2400	3550
	6, 8, 10, 12	1000 ± 2.1	1400 ± 2.1	500 ± 4.0	160 ^{+0.040} _{-0.015}	300 ± 0.65	40	169	22	560 ⁰ ₋₁₀	42	200	1260	760	1200	930	600	2100	305	45	2400	3550
630	4	1120 ± 2.1	1600 ± 2.1	530 ± 4.0	170 ^{+0.040} _{-0.015}	300 ± 0.65	40	179	22	630 ⁰ ₋₁₀	48	250	1400	830	1260	1000	600	2200	300	45	2720	3800
	6, 8, 10, 12	1120 ± 2.1	1600 ± 2.1	530 ± 4.0	180 ^{+0.040} _{-0.015}	300 ± 0.65	45	190	25	630 ⁰ ₋₁₀	48	250	1400	830	1260	1000	600	2200	300	45	2720	3800

YX、YXKS、YXKK 6kV 系列高效高压三相异步电动机

YX, YXKS, YXKK Series 6kV High-efficiency High-voltage Three-phase Asynchronous Motor

► YXKK(IP54)系列中型电动机外形及安装尺寸图

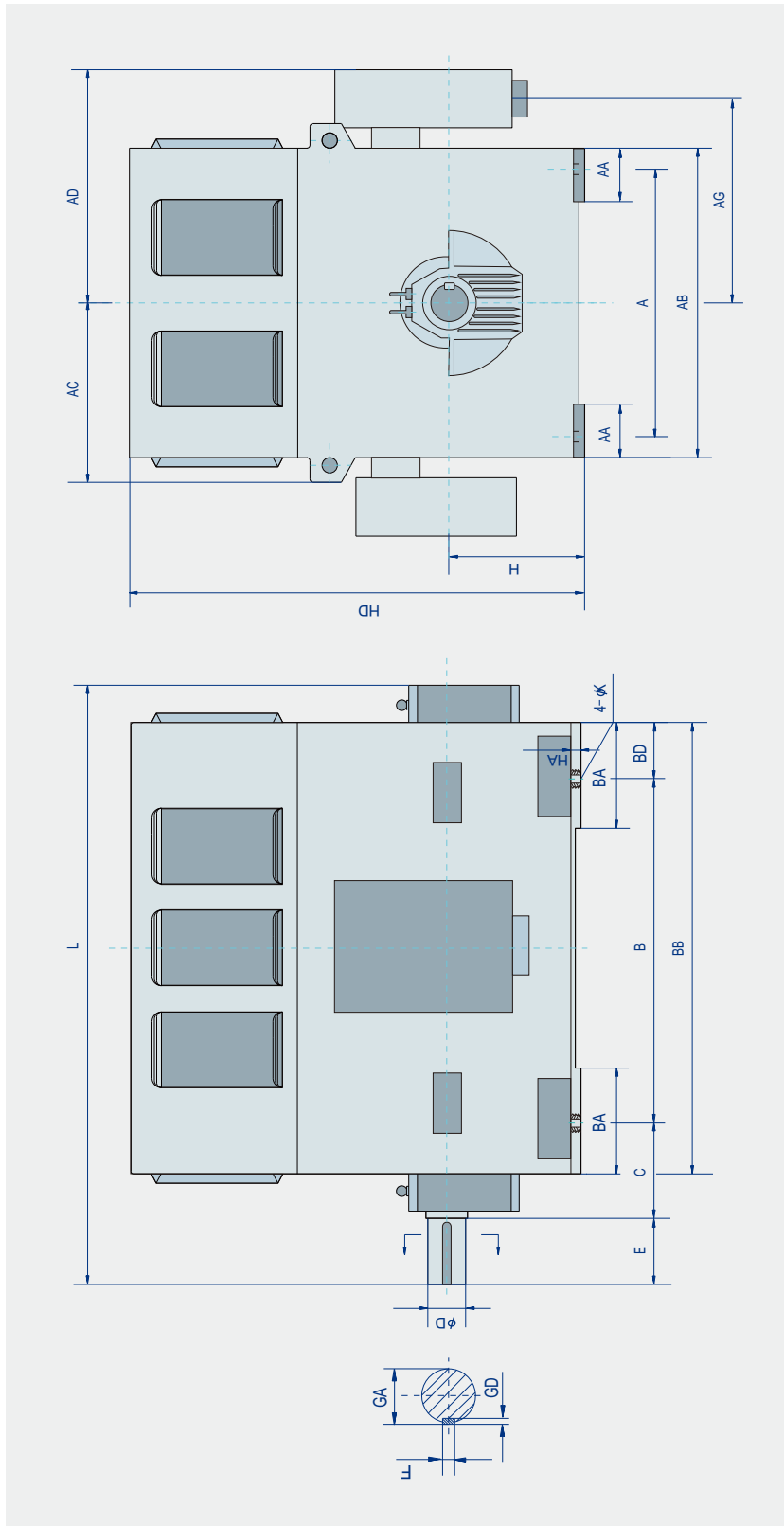
Outline Drawings and Mounting Dimensions for YXKK(IP54) Series Medium-sized Motor



机座号 Frame No.	极数 No. of pole	安装尺寸及公差 Mounting dimensions										外形尺寸 Overall dimension										
		A	B	C	D	E	F	GA	GD	H	K	AA	AB	AC	AD	AG	BA	BB	BD	HA	HD	L
560	2	1000 ± 2.1	1400 ± 2.1	560 ± 4.0	130 ^{+0.040} _{-0.035}	250 ± 0.57	32	137	18	560 ^{±0.10}	42	205	1260	760	1170	920	600	1990	295	47	2120	3580
630	2	1120 ± 2.1	1600 ± 2.1	560 ± 4.0	140 ^{+0.040} _{-0.035}	250 ± 0.57	36	148	20	630 ^{±0.10}	48	235	1400	840	1240	990	700	2100	250	52	2610	3790
710	2	1400 ± 2.8	1800 ± 2.8	600 ± 4.2	170 ^{+0.040} _{-0.035}	300 ± 0.65	40	179	22	710 ^{±0.10}	56	280	1600	930	1340	1090	650	2300	250	72	2750	3900

YX、YXKS、YXKK 6kV 系列高效高压三相异步电动机
YX, YXKS, YXKK Series 6kV High-efficiency High-voltage Three-phase Asynchronous Motor

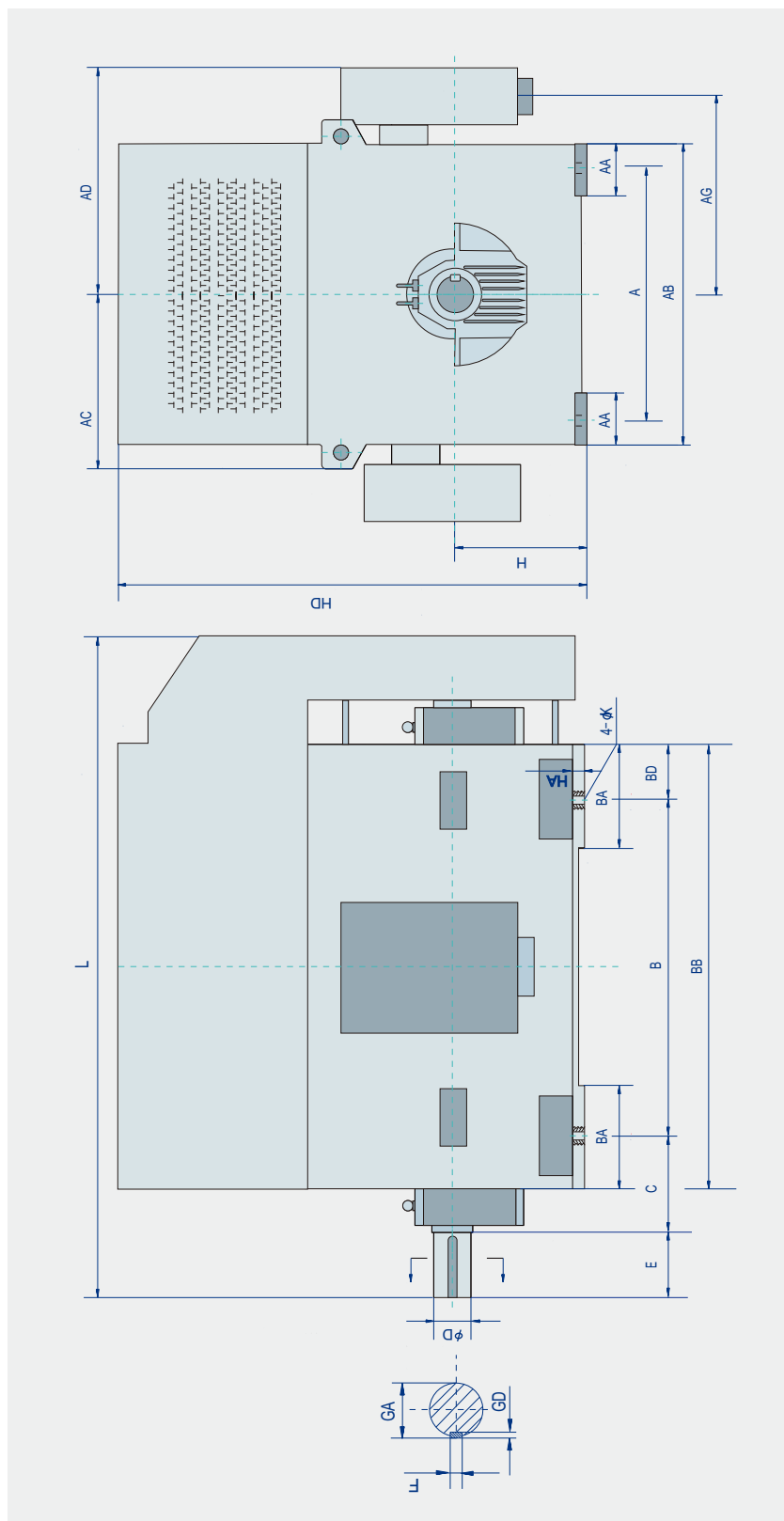
► **YX(IP23)系列大型电动机外形及安装尺寸图**
 Outline Drawings and Mounting Dimensions for YX (IP23) Series Medium-sized Motor



机座号 Frame No.	安装尺寸及公差										外形尺寸										
	A	B	C	D	E	F	GA	GD	H	K	AA	AB	AC	AD	AG	BA	BB	BD	HA	HD	L
710	1400 ± 2.8	1800 ± 2.8	530 ± 4.2	200 ^{+0.04} _{-0.017}	350 ± 0.70	45	210	25	710 ^{±1.5}	56	280	1600	930	1500	1135	560	2390	295	61	2400	3200
800	1600 ± 2.8	2000 ± 2.8	530 ± 4.2	220 ^{+0.04} _{-0.017}	350 ± 0.70	50	231	28	800 ^{±1.5}	56	280	1860	1100	1600	1265	560	2590	345	70	3300	3500
900	1800 ± 3.5	2240 ± 3.5	600 ± 4.2	250 ^{+0.04} _{-0.017}	410 ± 0.77	56	262	32	900 ^{±1.5}	66	310	2060	1200	1700	1355	600	2790	275	70	3500	3800
1000	2000 ± 3.5	2500 ± 3.5	600 ± 4.2	280 ^{+0.04} _{-0.020}	470 ± 0.77	63	292	32	1000 ^{±1.5}	66	310	2250	1300	1800	1450	600	2990	245	70	3800	4200

YX、YXKS、YXKK 6kV 系列高效高压三相异步电动机
 YX, YXKS, YXKK Series 6kV High-efficiency High-voltage Three-phase Asynchronous Motor

► YXKK(IP54)系列大型电动机外形及安装尺寸图
 Outline Drawings and Mounting Dimensions for YXKK (IP54) Series Medium-sized Motor



机座号 Frame No.	安装尺寸及公差										外形尺寸										
	A	B	C	D	E	F	GA	GD	H	K	AA	AB	AC	AD	AG	BA	BB	BD	HA	HD	L
710	1400 ± 2.8	1800 ± 2.8	530 ± 4.2	200 ^{+0.046} _{-0.077}	350 ± 0.70	45	210	25	710 ^{±0.15}	56	280	1600	930	1500	1135	560	2390	295	61	2710	3580
800	1600 ± 2.8	2000 ± 2.8	530 ± 4.2	220 ^{+0.046} _{-0.077}	350 ± 0.70	50	231	28	800 ^{±0.15}	56	280	1860	1100	1600	1265	560	2590	345	70	3300	3900
900	1800 ± 3.5	2240 ± 3.5	600 ± 4.2	250 ^{+0.046} _{-0.077}	410 ± 0.77	56	262	32	900 ^{±0.15}	66	310	2060	1200	1700	1355	600	2790	275	70	3500	4400
1000	2000 ± 3.5	2500 ± 3.5	600 ± 4.2	280 ^{+0.052} _{-0.076}	470 ± 0.77	63	292	32	1000 ^{±0.15}	66	310	2250	1300	1800	1450	600	2990	245	70	4100	4700



电机振动国家标准

National Standards for Vibration of Electric Machines

按照中华人民共和国国家标准《轴中心高为56mm及以上电机的机械振动 振动的测量、评定及限值》(GB10068-2008)对电机振动的标准要求。在标准要求的条件下,我公司电机空载运行时,工厂振动试验所测得的用位移、速度表示的振动强度限值分别为:37 μm 、2.3mm/s。

According to requirements for vibration of electric machines stipulated in P.R.C national standard, Mechanical vibration of certain machines with shaft heights 56mm and higher- Measurement, evaluation and limits of vibration severity (GB10068-2008), the limits of vibration severity in displacement and velocity measured in factory vibration test under no-load operation are 3.7 μm and 2.3 $\mu\text{m/s}$ respectively.

国家标准的节选内容如下:

Extract from national standard is as follows:

• 振动强度限值

振动限值适用于在第5章中规定的频率范围所测得的振动速度、位移和加速度的宽带方均根值。用这三个测量量值的最大值来评价振动的强度。

如第6章所规定的两种安装条件,轴中心高56mm及以上直流和三相交流电机的振动强度应不超过表1中的限值。振动等级划分为两种。如未指明振动等级时,电机的振动限值应符合等级“A”的要求。

转速为600r/min~3600 r/min的电机,检查试验时,只需测量振动的速度。型式试验时,所有三种振动量值都应测量。

注:当检查试验是在自由悬置安装条件下做的,型式试验则必须包括在刚性安装情况下的试验。这一条适用于本标准所有速度范围。

• Limits of vibration severity

The limits apply to the measured broadband r.m.s. of vibration velocity, displacement and acceleration in the frequency range specified in Clause 5. Decisive for the evaluation of vibration magnitude is the highest value of these three measurement quantities.

The vibration magnitude for d.c. and three-phase a.c. machines with shaft height 56mm and higher, for one of either of the two mounting conditions according to Clause 6, shall not exceed the limits specified in Table 1. Limits are given for two vibration grades. When no grade is specified, machines complying with this standard shall be grade "A".

For routine tests of standard machines with speeds between, and including, 600 min⁻¹ and 3600 min⁻¹, it is sufficient to measure only vibration velocity. All three vibration magnitudes shall be verified during type testing.

Note: when routine test is made with free-suspension mounting condition, the type test should also include testing with rigid mounting. This note is valid for the whole speed range of this standard.

表1 不同轴中心高H(mm)用位移、速度和加速度表示的振动强度限值(方均根值)

Table 1-limits of vibration magnitude in displacement, velocity and acceleration (r.m.s.) for shaft height H(mm)

振动等级	轴中心高/mm	56≤H≤132			132<H≤280			H>280		
	安装方式	位移/ μm	速度/(mm/s)	加速度/(m/s^2)	位移/ μm	速度/(mm/s)	加速度/(m/s^2)	位移/ μm	速度/(mm/s)	加速度/(m/s^2)
A	自由悬置	25	1.6	2.5	35	2.2	3.5	45	2.8	4.4
	刚性安装	21	1.3	2.0	29	1.8	2.8	37	2.3	3.6
B	自由悬置	11	0.7	1.1	18	1.1	1.7	29	1.8	2.8
	刚性安装	—	—	—	14	0.9	1.4	24	1.5	2.4

注1:等级“A”适用于对震动无特殊要求的电机。

注2:等级“B”适用于对振动有特殊要求的电机。轴中心高小于132mm的电机,不考虑刚性安装。

注3:位移与速度,速度与加速度的接口频率分别为10Hz和250Hz。

Note 1: Grade "A" applies to machines with no special vibration requirements.

Note 2: Grade "B" applies to machines with special vibration requirement. Rigid mounting is not considered acceptable for machines with shaft heights less than 132mm.

Note 3: The interface frequencies for displacement/velocity and velocity/acceleration are 10Hz and 250Hz respectively.

注1:制造厂和用户应考虑到检测仪器可能有 $\pm 10\%$ 的测量容差。

注2:以相同机座带底脚卧式电机的轴中心高作为机座无底脚电机、底脚朝上安装式电机或立式的轴中心高。

注3:一台电机,自身平衡较好且振动强度等级符合表1的要求,但安装在现场中因受各种因素,如地基不平、负载机械的反作用以及电源中纹波电流的影响等等,也会显示较大的振动。另外,由于所驱动的诸单元的固有频率与电机旋转体微小残余不平衡的激励频率极为接近也会引起振动,在这些情形下,不仅只是对电机,而且对装置中的每一单元都要检验,见ISO10816-3。

Note 2 The shaft height of a machine without feet, or a machine with raised feet, or any vertical machine is to be taken as the shaft height of a machine in the same basic frame, but of the horizontal shaft foot-mounting type.

Note 3 A machine which is well-balanced in itself and of a grade conforming with Table 1, may exhibit large vibrations when installed in-situ arising from various causes, such as unsuitable foundations, reaction of the driven machine, current ripple from the power supply etc. Vibration may also be caused by driving elements with a natural oscillation frequency very close to the excitation due to the small residual unbalance of the rotating masses of the machine. In such cases, checks should be carried out not only on the machine, but also on each element of the installation, (see ISO 10816-3).

电机噪声国家标准

National Standards for Noise of Electric Machines

中华人民共和国国家标准《旋转电机噪声测定方法及限值第3部分：噪声限值》(GB10069.3-2008)对电机噪声的标准有如下说明及要求。

噪声可用声功率级或声压级表示，单位均为分贝(dB)，电机噪声一般按声功率级考核，声功率级和声压级数值根据电机大小(包络面面积)不同有较大差异，一般情况下声功率级比声压级数值大15~18(dB)。

The description and requirements for motor noise in the P.R.C national standard, Measurement of airborne noise emitted by rotating electric machine and the noise limits-Part 3: noise limits, is as follows:

Noise can be expressed by sound power level and sound pressure level, both in dB. Motor noise generally is evaluated with sound power level; the values of sound power level and sound pressure level are highly varied with different motor sizes (the area of the surface enveloping the machine). In general, the value of sound power level is 15 to 18 dB bigger than that of sound pressure level.

• 国标第6页对电机在空载运行时，对应不同的转速、冷却方式、额定输出功率情况下所测得的声功率级L_w(dB)规定不得超过下表数值。

• The sound pressure level L_w (dB) measured with different speeds, methods of cooling and rated outputs as the motor operating at no-load do not exceed the values specified in the table below, as shown in page 6.

额定转速 nN/(r/min)	nN≤960			960<nN≤1320			1320<nN≤1900			1900<nN≤2360			2360<nN≤3150			3150<nN≤3750		
冷却方式 (简单代码)	IC01 IC11 IC21	IC411 IC511 IC611	IC31 IC71W IC81W IC8A1W7	IC01 IC11 IC21	IC411 IC511 IC611	IC31 IC71W IC81W IC8A1W7	IC01 IC11 IC21	IC411 IC511 IC611	IC31 IC71W IC81W IC8A1W7	IC01 IC11 IC21	IC411 IC511 IC611	IC31 IC71W IC81W IC8A1W7	IC01 IC11 IC21	IC411 IC511 IC611	IC31 IC71W IC81W IC8A1W7	IC01 IC11 IC21	IC411 IC511 IC611	IC31 IC71W IC81W IC8A1W7
	注1	注2	注2	注1	注2	注2	注1	注2	注2	注1	注2	注2	注1	注2	注2	注1	注2	注2
额定输出P _N / kW(或kVA)																		
1 ≤ P _N ≤ 1.1	73	73	—	76	76	—	77	78	—	79	81	—	81	84	—	82	88	—
1.1 < P _N ≤ 2.2	74	74	—	78	78	—	81	82	—	83	85	—	85	88	—	86	91	—
2.2 < P _N ≤ 5.5	77	78	—	81	82	—	85	86	—	86	90	—	89	93	—	93	95	—
5.5 < P _N ≤ 11	81	82	—	85	85	—	88	90	—	90	93	—	93	97	—	97	98	—
11 < P _N ≤ 22	84	86	—	88	88	—	91	94	—	93	97	—	96	100	—	97	100	—
22 < P _N ≤ 37	87	87	—	91	91	—	94	98	—	96	100	—	99	102	—	101	102	—
37 < P _N ≤ 55	90	93	—	94	94	—	97	100	—	98	102	—	101	104	—	103	104	—
55 < P _N ≤ 110	93	96	—	97	98	—	100	103	—	101	104	—	103	106	—	105	106	—
110 < P _N ≤ 220	97	99	—	100	102	—	103	106	—	103	107	—	105	109	—	107	110	—
220 < P _N ≤ 550	99	102	98	103	105	100	106	108	102	106	109	102	107	111	102	110	113	105
550 < P _N ≤ 1100	101	105	100	106	108	103	108	111	104	108	111	104	109	112	104	111	116	106
1000 < P _N ≤ 2200	103	107	102	108	110	105	109	113	105	109	113	105	110	113	105	112	118	107
2200 < P _N ≤ 5500	105	109	104	110	112	106	110	115	106	111	115	107	112	115	107	114	120	109

注1：典型的防护类型为IP22或者IP23。
注2：典型的防护类型为IP44或者IP55。
Note 1: typical enclosure classification IP22 or IP23.
Note 2: typical enclosure classification IP44 or IP45.

• 国家标准对声压级没有具体要求，如果有要求，声压级可直接由下式的声功率级换算：

• Sound power pressure levels are not required as part of this standard. If requested, a sound pressure level may be determined directly from the sound power level as follows:

(公式1)

$$L_p = L_w - 10 \lg \left(\frac{S}{S_0} \right)$$

式中：

L_p — 距电机1m的反射面上自由场中声压级

L_w — 依据标准确定的声功率级

S₀ — 1.0 m²

S — 距基准体1m的电机测量包络面面积

L_p is the sound pressure level in a free-field over a reflecting plane at 1m distance from the machine;
L_w is the sound power level determined according to this standard;
S₀ is 1,0m²;
S is the area of the surface enveloping the machine at a distance from the machine of 1m;

电机油漆颜色

Paint Color of Electric Machine



经统计多年来客户使用电机的颜色情况，综合一些优缺点，建议客户在订货时，从以下几种常用颜色中进行选择。

According to statistical analysis of the paint colors of motors selected by our customers for years and combined with several advantages and disadvantages, it is recommended to select the following commonly used colors when placing an order.

首选推荐颜色：

Recommended colors preferred

客户未指定面漆颜色时,默认采用为我厂锤纹漆,室内使用的电机采用国标GSB05-1426"深豆绿"(G09),室外使用的电机采用国标GSB05-1426"淡灰"(B03)。

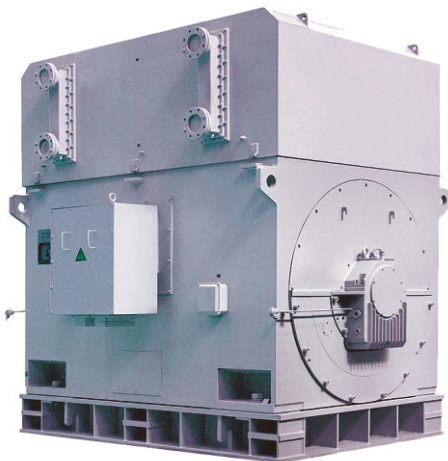
优点：该两种颜色为聚氨酯锤纹漆，其花纹美观清晰，漆膜光亮丰满，耐候性佳，耐油、耐化学腐蚀性好，且硬度和耐磨性好。漆膜干燥较快，施工方便，广泛适用于室内、外各种金属结构。

If the color of finishing coat is not specified by customer, our hammer finish paint would be used, with dark pea green (GSB05-1426) for electric machines indoor and light grey (GSB05-1426) for those outdoor.

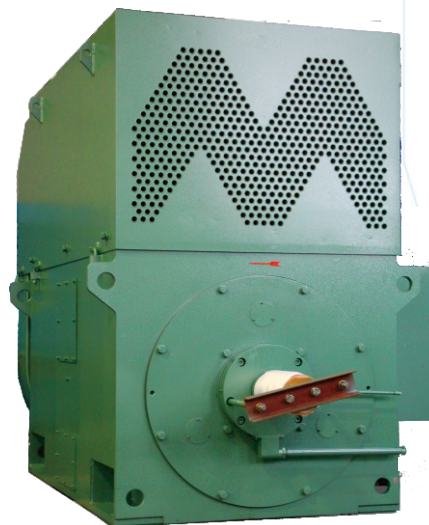
Advantages: Both colors are polyurethane hammer finish paints, with beautiful clear patterns, bright full paint film, good resistance to weather, oil, and chemical corrosion, good hardness and wear resistance. The paint film may get dry fast and easily prepared. They are widely used for various metallic structures, indoor and outdoor.

范例：

For example



淡灰
Light grey



深豆绿
Bottle pea green

我厂交流电机推荐选用的面漆颜色

Recommended colors of finishing coat for our AC motor

- 推荐选用的颜色标准为国标 GSB05-1426 色卡、国际 RAL 经典色卡。**
Recommended color standards: national GSB05-1426 Standard Sample Color Cards and international RAL classic colors;
- 我厂交流电机推荐选用的颜色如下：**
The recommended colors for our AC motors are as follows:
 - 常用国标色卡 GSB 05-1426 中颜色，20 种：**
Commonly used colors in national standard color cards GSB05-1426, total 20 colors:

淡(铁)蓝(PB07) Light (iron) blue	淡灰(B03) Light grey	银灰(B04) Silver grey	海灰(B05) Ocean grey
冰灰(GY09) Cold grey	苹果绿(G01) Pastel green	孔雀蓝(PB11) Peacock blue	天(酞)蓝 (PB09) Sky (phthalocyanine) blue
飞机灰(G10) Aircraft grey	深绿(G05) bottle green	淡绿(G02) Pale green	湖绿(BG02) Lake green
玉灰(GY11) Jade grey	乳白(Y11) Milky white	蓝灰(PB08) Bluish grey	深豆绿(G09) Bottle pea green
中绿灰(BG01) Granite grey	海蓝(PB05) Sea blue	驼灰(Y01) Camel grey	象牙(Y04) Ivory

- 2.2常用国际通用色卡RAL 中颜色，5 种：**
Commonly used colors in international universal color cards RAL, total 5 colors:

浅灰(RAL 7035) Light grey	淡蓝(RAL 5012) Pale blue	天蓝(RAL 5015) Sky blue	白铝灰(RAL 9006) White aluminium	浅绿(RAL 6021) Light blue
----------------------------	---------------------------	--------------------------	----------------------------------	----------------------------

附注：1、油漆颜色的电子版本仅供参考，施工及质量检验均以实物标准色卡为准。
2、订货时请在合同文件中注明油漆标号。

Note: 1. the electronic edition of paint color is for reference only.
Painting and quality inspection are subject to physical standard color cards.
2. Please indicate paint code in the contract when placing an order.